

Štandardné koncovky Typ 100

Standard fittings Type



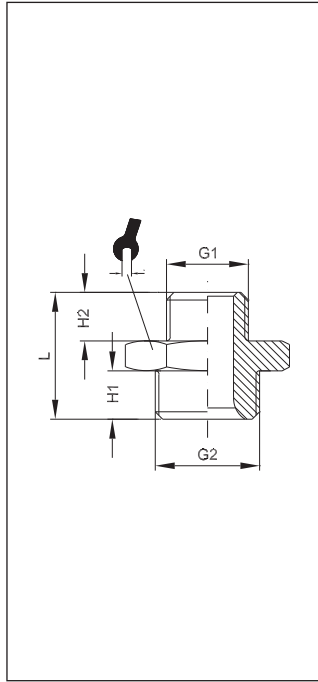
Funkcie

- ▶ **Material poniklovaná mosadz**
- ▶ **pre svorky M5 až G1"**
- ▶ **Vysoká pružnosť**
- ▶ **Poniklovanie pre zvýšenie korozivzdornosti**
- ▶ **Brass fittings**
- ▶ **For connections from M5 to G1"**
- ▶ **High resilience**
- ▶ **Nickel-plating for corrosion protection**

Technické údaje **Technical data**

Pracovná teplota	max. +150°C	závisí od teplotného rozsahu použitej trúbky
Pracovný tlak	až 60bar	závisí od tlakového rozsahu použitej trúbky a nastavenej teploty
Materiály	Poniklovaná mosadz (Ms58) alebo leštená	
Závit	Valcový závit DIN EN ISO 228 Kužeľový závit DIN EN 10226 (ISO7 / DIN 2999) metr. závit DIN ISO 262	
Médium	vzduch, hydraulický olej	

Operating temperature	Max +150°C	Dependent on the temperature range of the tube/pipe used
Operating pressure	Up to 60 bar	Dependent on the pressure range of the tube/pipe used and the temperature used
Materials	Brass (Ms58), nickel-plated or polished	
Thread	Cyl. thread, DIN EN ISO 228 Con. thread, DIN EN 10226 (ISO7 / DIN 2999) Metr. thread, DIN ISO 262	
Medium	Pneumatic, oil-hydraulic and hydraulic circuits	

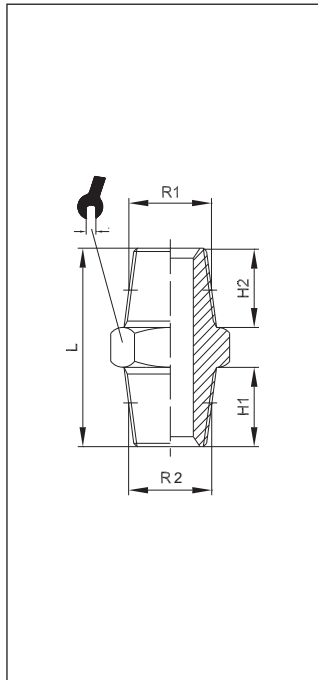


101

Priame šrúbenie

Double nipple cyl.

VT	G1	G2	H1	H2	L		
20101	M5	M5	4	4	11,5	8	100
20302	M5	G ¹ / ₈	6	4	14,5	14	100
20102	G ¹ / ₈	G ¹ / ₈	6	6	16,5	14	100
20303	G ¹ / ₈	G ¹ / ₄	8	6	19	17	100
20304	G ¹ / ₈	G ³ / ₈	9	6	20	19	100
20103	G ¹ / ₄	G ¹ / ₄	8	8	21	17	100
20305	G ¹ / ₄	G ³ / ₈	9	8	22	19	100
20306	G ¹ / ₄	G ¹ / ₂	10	8	23,5	24	100
20104	G ³ / ₈	G ³ / ₈	9	9	23	19	100
20307	G ³ / ₈	G ¹ / ₂	10	9	24,5	24	50
20105	G ¹ / ₂	G ¹ / ₂	10	10	25,5	24	50

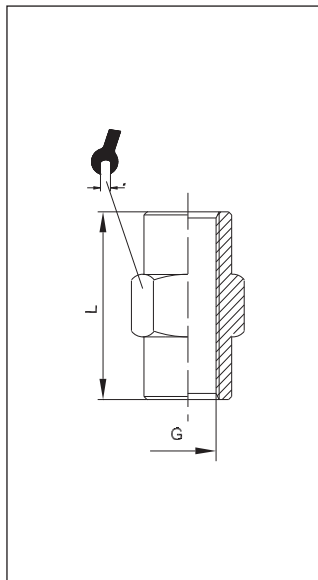


102

Priame šrúbenie s kužel'ovým závitom

Double nipple con.

VT	R1	R2	H1	H2	L		
20002	R ¹ / ₈	R ¹ / ₈	8	8	20,5	12	100
20202	R ¹ / ₈	R ¹ / ₄	11	8	24	14	100
20203	R ¹ / ₈	R ³ / ₈	11,5	8	24,5	17	100
20204	R ¹ / ₈	R ¹ / ₂	14	7,5	27	22	100
20003	R ¹ / ₄	R ¹ / ₄	11	11	27	14	100
20205	R ¹ / ₄	R ³ / ₈	11,5	11	27,5	17	100
20206	R ¹ / ₄	R ¹ / ₂	14	11	30,5	22	100
20004	R ³ / ₈	R ³ / ₈	11,5	11,5	28	17	100
20207	R ³ / ₈	R ¹ / ₂	14	11,5	31	22	100
20005	R ¹ / ₂	R ¹ / ₂	14	14	33,5	22	50
20208	R ¹ / ₂	R ³ / ₄	16	14	37	27	50
20006	R ³ / ₄	R ³ / ₄	16	16	39,5	27	25
20209	R ³ / ₄	R1	19	16,5	42,5	34	25
20007	R1	R1	19	19	45,5	34	25



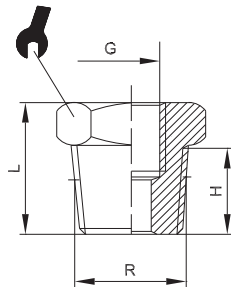
103

Priame šrúbenie s vnútorným závitom Mufka

Sleeve

fluid division
VT-HADICE & PLAST

VT	G	L		
30001	M5	11	8	100
30002	G ¹ / ₈	15	14	100
30003	G ¹ / ₄	22	17	100
30004	G ³ / ₈	23	22	100
30005	G ¹ / ₂	28	26	50
30006	G ³ / ₄	32	32	50

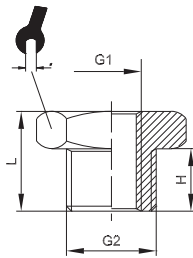


104

Redukcia s kuželovým závitom

Reducer con.

VT	R	G	H	L		
20801	R ^{1/4}	G ^{1/8}	11	16	14	100
20802	R ^{3/8}	G ^{1/8}	11,5	16,5	17	100
20803	R ^{1/2}	G ^{1/8}	14	19,5	22	50
20804	R ^{3/8}	G ^{1/4}	11,5	16,5	17	100
20805	R ^{1/2}	G ^{1/4}	14	19,5	22	50
20806	R ^{1/2}	G ^{3/8}	14	19,5	22	50
20807	R ^{3/4}	G ^{1/2}	16,5	23	27	50
20808	R1	G ^{1/2}	19	27,5	34	25
20809	R1	G ^{3/4}	18,5	27,5	34	25
20810	R ^{3/4}	G ^{3/8}	16,5	23,5	27	25

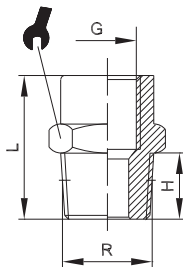


104/Z

Redukcia

Reducer cyl.

VT	G1	G2	H	L		
20902	M5	G ^{1/8}	6,0	10,5	14	100
20903	G ^{1/8}	G ^{1/4}	9	13	17	100
20904	G ^{1/8}	G ^{3/8}	9	14	19	100
20905	G ^{1/4}	G ^{3/8}	9	14	19	100
20906	G ^{1/8}	G ^{1/2}	10	15,5	24	100
20907	G ^{1/4}	G ^{1/2}	10	15,5	24	50
20908	G ^{3/8}	G ^{1/2}	10	15,5	24	50
20909	G ^{3/8}	G ^{3/4}	11	17,5	30	50
20910	G ^{1/2}	G ^{3/4}	11	17,5	30	50



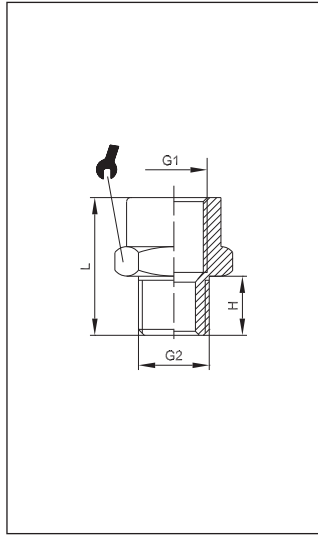
105

Priama spojka s kuželovým závitom

Extension con.

fluid division
VT-HADICE & PLAST

VT	R	G	H	L		
20402	R ^{1/8}	G ^{1/8}	8	18	14	100
20403	R ^{1/8}	G ^{1/4}	8	21,5	17	100
20404	R ^{1/8}	G ^{3/8}	8	22,5	22	100
20405	R ^{1/4}	G ^{1/4}	11	24,5	17	100
20406	R ^{1/4}	G ^{3/8}	11	25,5	22	100
20407	R ^{1/4}	G ^{1/2}	11	29	24	50
20408	R ^{3/8}	G ^{3/8}	11,5	26	22	100
20409	R ^{3/8}	G ^{1/2}	11,5	29	24	50
20410	R ^{1/2}	G ^{1/2}	14	32	26	50
20411	R ^{1/2}	G ^{3/4}	14	35	32	50

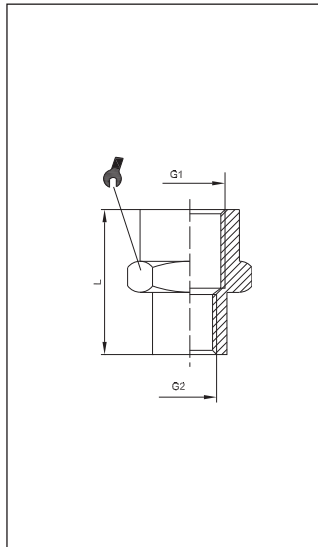


105/Z

Redukcia

Parallel M/F extension

VT	G1	G2	H	L		
20501	G ¹ / ₈	M5	4	14,5	14	100
20502	G ¹ / ₈	G ¹ / ₈	6	16	14	100
20503	G ¹ / ₄	G ¹ / ₈	6	19,5	17	100
20504	G ³ / ₈	G ¹ / ₈	6	20,5	22	100
20505	G ¹ / ₄	G ¹ / ₄	8	21,5	17	100
20506	G ³ / ₈	G ¹ / ₄	8	22,5	22	50
20507	G ¹ / ₂	G ¹ / ₄	8	26	24	100
20508	G ³ / ₈	G ³ / ₈	9	23,5	22	100
20509	G ¹ / ₂	G ³ / ₈	9	27	24	50
20510	G ¹ / ₂	G ¹ / ₂	10	28	26	50
20511	G ³ / ₄	G ¹ / ₂	11	28	32	25
20513	G1	G ³ / ₄	11	29	38	10

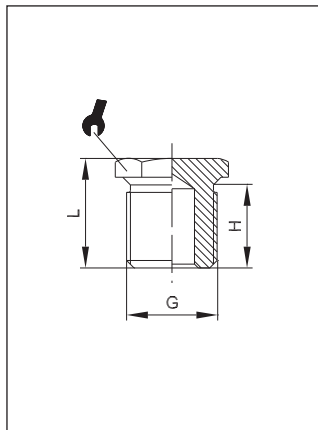


106

Redukcia

Reducing sleeve

VT	G1	G2	L		
30101	G ¹ / ₈	M5	13,5	14	100
30102	G ¹ / ₄	G ¹ / ₈	19	17	100
30103	G ³ / ₈	G ¹ / ₈	20	22	50
30104	G ¹ / ₂	G ¹ / ₈	24	24	100
30105	G ³ / ₈	G ¹ / ₄	22,5	22	50
30106	G ¹ / ₂	G ¹ / ₄	26	24	50
30107	G ¹ / ₂	G ³ / ₈	26	24	50
30108	G1	G ¹ / ₂	39	40	25
30109	G1	G ³ / ₄	41	40	25
30110	G ¹ / ₂	G ³ / ₄	30	32	25

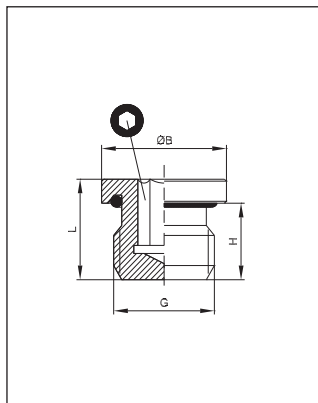


107

Zátka

Parallel male plug

VT	G	H	L		
30201	M5	4	7	8	100
30202	G ¹ / ₈	6	10	14	100
30203	G ¹ / ₄	8	12,5	17	100
30204	G ³ / ₈	9	13,5	19	100
30205	G ¹ / ₂	10	15,5	24	50
30206	G ³ / ₄	11	16,5	30	25
30207	G1	13	19	38	25



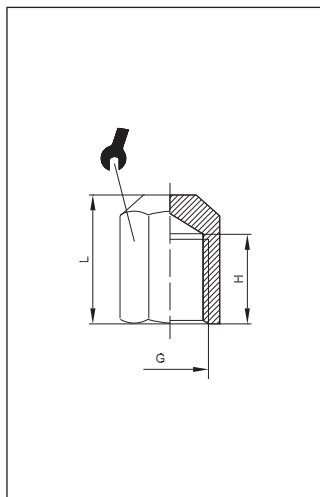
107 - OR

Zátka s O - krúžkom

Parallel male plug with O-ring

fluid division
VT-HADICE & PLAST

VT	G	ØB	H	L		
30150	M5	8	4,5	7,2	2,5	50
30151	M7	11	6	9	4	50
30152	G ¹ / ₈	14	6,5	9,5	5	50
30153	G ¹ / ₄	17	8	11,5	6	50
30154	G ³ / ₈	20	9	12,5	8	25
30155	G ¹ / ₂	26	11	14	10	25

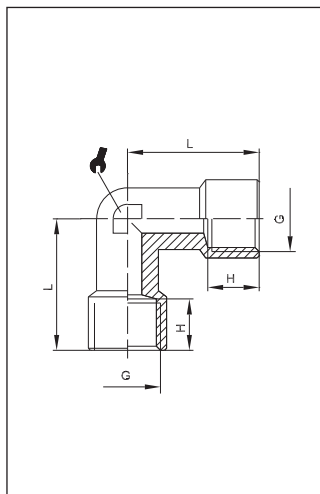


108

Zátka

Female plug

VT	G	H	L		
30302	G ¹ / ₈	8	11,5	14	100
30303	G ¹ / ₄	11	15	17	100
30304	G ³ / ₈	12	15,5	20	50
30305	G ¹ / ₂	14	20	24	50

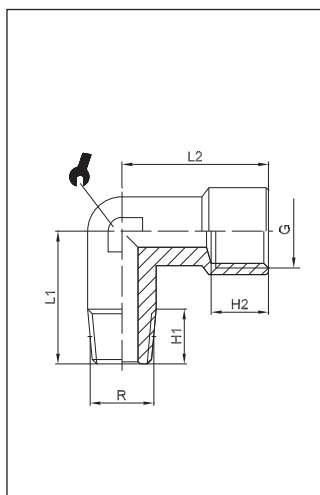


109

L - kus

Female elbow

VT	G	H	L		
50102	G ¹ / ₈	8	21	10	100
50103	G ¹ / ₄	11	25,5	13	50
50104	G ³ / ₈	11,5	28	17	25
50105	G ¹ / ₂	14	33,5	21	25
50106	G ³ / ₄	16,5	36,5	25	25
50107	G1	19	45	30	25

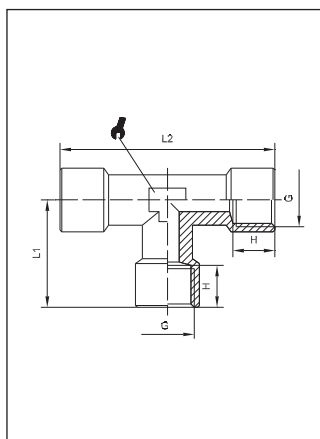


110

L-kus vnútorný/vonkajší závit

Male-female elbow

VT	R	G	H1	H2	L1	L2		
50201	M5	M5	4	4	11,5	11	9	100
50208	R ¹ / ₄	G ¹ / ₈	11	8	21,5	21	10	100
50202	R ¹ / ₈	G ¹ / ₈	8	8	18,5	21	10	100
50203	R ¹ / ₄	G ¹ / ₄	11	11	23,5	25,5	13	50
50204	R ³ / ₈	G ³ / ₈	11,5	11,5	26	28	17	25
50205	R ¹ / ₂	G ¹ / ₂	14	14	31	33,5	21	25
50206	R ³ / ₄	G ³ / ₄	16	16,5	33	36,5	25	10
50207	R1	R1	17	19	39	45	30	10



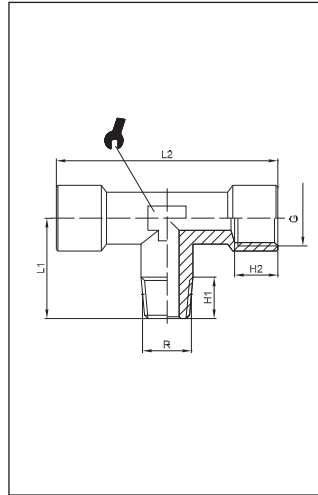
111

T-kus s vnútorným závitom

Female Tee

fluid division
VT-HADICE & PLAST

VT	G	H	L1	L2		
40003	G ¹ / ₈	8	21	42	10	100
40004	G ¹ / ₄	11	25,5	51	13	50
40005	G ³ / ₈	11,5	28	56	17	25
40006	G ¹ / ₂	15	33,5	67	21	25
40007	G ³ / ₄	16,5	36,5	73	25	10
40008	G1	19	45	90	30	10

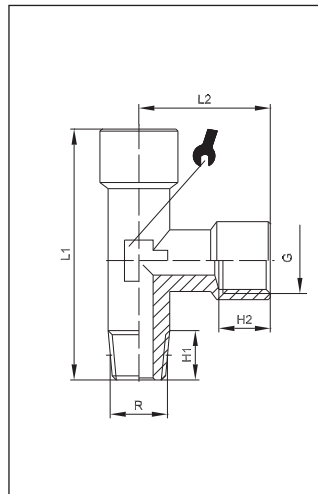


112

T-kus s vonkajším kuželovým závitom zdola

Centre male Tee, con.

VT	R	G	H1	H2	L1	L2		
40401	M5	M5	5	4	11,5	22	9	100
40402	R ^{1/8}	G ^{1/8}	8	8	18,5	42	10	100
40403	R ^{1/4}	G ^{1/4}	11	11	23,5	51	13	50
40404	R ^{3/8}	G ^{3/8}	11,5	11,5	26	56	17	25
40405	R ^{1/2}	G ^{1/2}	14	14	31	67	21	25
40406	R ^{3/4}	G ^{3/4}	16	16,5	33	73	25	10
40407	R1	G1	17,5	19	39	90	30	10

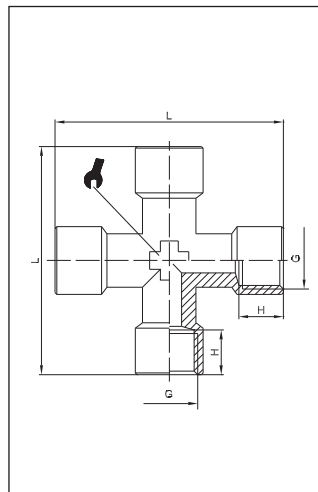


113

T-kus s vonkajším kuželovým závitom zbokú

Off-set male T-MFF, con.

VT	R	G	H1	H2	L1	L2		
40502	R ^{1/8}	G ^{1/8}	8	8	39,5	21	10	100
40503	R ^{1/4}	G ^{1/4}	11	11	49	25,5	13	50
40504	R ^{3/8}	G ^{3/8}	11,5	11,5	54	28	17	25
40505	R ^{1/2}	G ^{1/2}	14	14	64,5	33	21	25
40506	R ^{3/4}	G ^{3/4}	16	16,5	69,5	36,5	25	10
40507	R1	G1	17,5	19	84	45	30	10

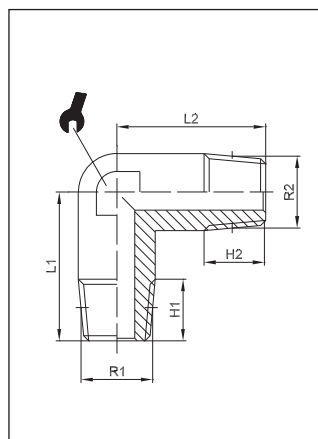


114

Križ s vnútorným závitom

Female cross

VT	G	H	L		
60202	G ^{1/8}	8	42	10	25
60203	G ^{1/4}	11	51	13	25
60204	G ^{3/8}	11,5	56	17	25
60205	G ^{1/2}	14	67	21	25



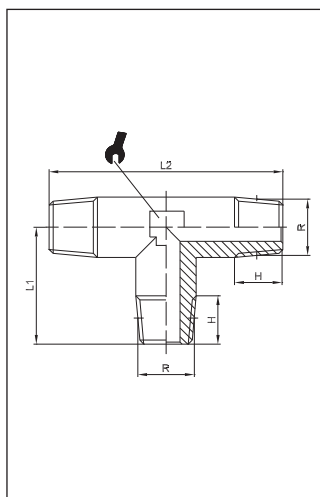
115

L - kus

Male elbow, con.

fluid division
VT-HADICE & PLAST

VT	R1	R2	H1	H2	L1	L2		
50002	R ^{1/8}	R ^{1/8}	8	8	18,5	18,5	10	100
50008	R ^{1/4}	R ^{1/8}	11	8	21,5	19	10	100
50003	R ^{1/4}	R ^{1/4}	11	11	23,5	23,5	13	50
50004	R ^{3/8}	R ^{3/8}	11,5	11,5	26	26	17	25
50005	R ^{1/2}	R ^{1/2}	14	14	31	31	21	25
50006	R ^{3/4}	R ^{3/4}	16	16	33	33	25	10
50007	R1	R1	17	17	39	39	30	10

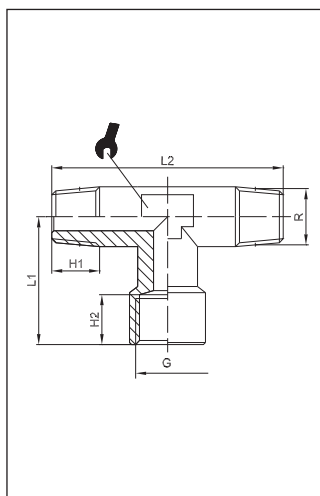


116

T-kus s vonkajší závitom

Male Tee con.

VT	R	H	L1	L2		
40103	R ¹ / ₈	8	18,5	37	10	100
40104	R ¹ / ₄	11	23,5	47	13	50
40105	R ³ / ₈	11,5	26	52	17	25
40106	R ¹ / ₂	14	31	62	21	25
40107	R ³ / ₄	16	33	66,4	25	10
40108	R1	17,5	39	78	30	10

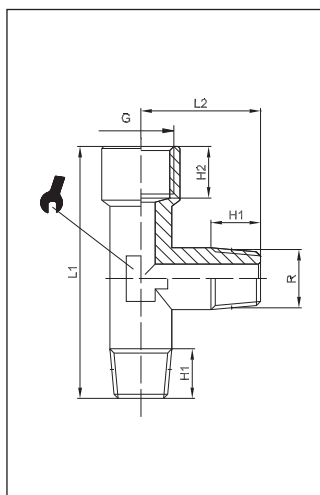


117

T-kus s vnútorným závitom zdola

Centre female tee con.

VT	R	G	H1	H2	L1	L2		
40202	R ¹ / ₈	G ¹ / ₈	8	8	21	37	10	100
40203	R ¹ / ₄	G ¹ / ₄	11	11	25,5	47	13	50
40204	R ³ / ₈	G ³ / ₈	11,5	11,5	28	52	17	25
40205	R ¹ / ₂	G ¹ / ₂	14	14	33,5	62	21	25
40206	R ³ / ₄	G ³ / ₄	16	16,5	36,5	66,4	25	10
40207	R1	G1	17,5	19	45	78	30	10

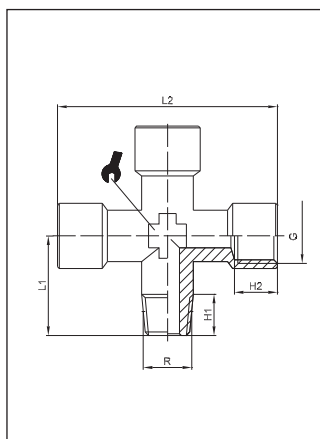


118

T-kus s vnútorným závitom z boku

Off-set female tee con.

VT	R	G	H1	H2	L1	L2		
40302	R ¹ / ₈	G ¹ / ₈	8	8	39,5	18,5	10	100
40303	R ¹ / ₄	G ¹ / ₄	11	11	49	23,5	13	50
40304	R ³ / ₈	G ³ / ₈	11,5	11,5	54	26	17	25
40305	R ¹ / ₂	G ¹ / ₂	14	14	64,5	31	21	25
40306	R ³ / ₄	G ³ / ₄	16	16,5	69,5	33	25	10
40307	R1	G1	17,5	19	84	39	30	10



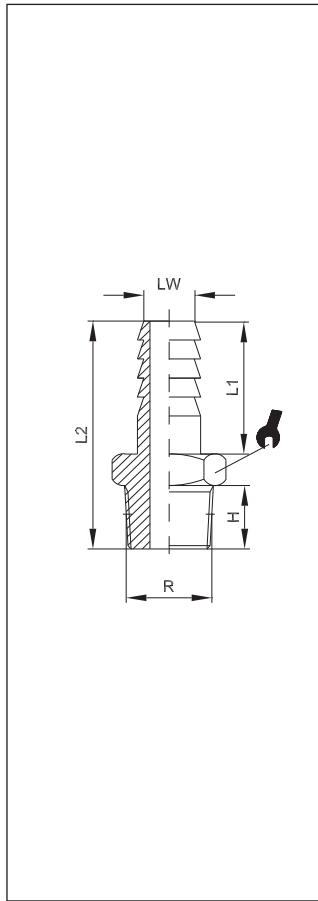
120

Križ s jedným vonkajším závitom

1 male 3 female cross, con.

fluid division
VT-HADICE & PLAST

VT	R	G	H1	H2	L1	L2		
60251	R ¹ / ₈	G ¹ / ₈	8	8	18,5	42	10	25
60252	R ¹ / ₄	G ¹ / ₄	11	11	23,5	51	13	25
60253	R ³ / ₈	G ³ / ₈	11,5	11,5	26	56	17	25
60254	R ¹ / ₂	G ¹ / ₂	14	14	31	67	21	25

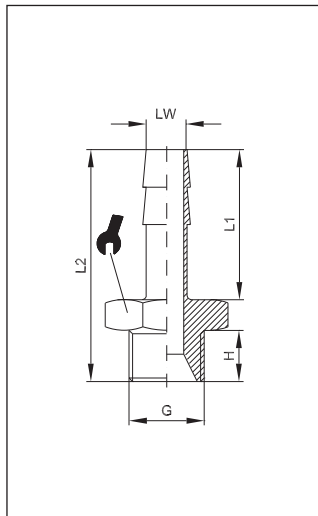


119

Hadicový nátrubok s vonkajším kuželovým závitom

Male hose adapter con.

VT	LW	R	H	L1	L2		
30402	6	R ^{1/8}	88	19	31,5	12	100
30403	6	R ^{1/4}	11	19	35	14	100
30404	7	R ^{1/8}	8	19	31,5	12	100
30405	7	R ^{1/4}	11	19	35	14	100
30406	8	R ^{1/8}	8	19	31,5	12	100
30407	8	R ^{1/4}	11	19	35	14	100
30408	9	R ^{1/8}	8	19	31,5	12	100
30409	9	R ^{1/4}	11	19	35	14	100
30410	9	R ^{3/8}	11,5	19	35,5	17	100
30411	9	R ^{1/2}	14	19	38,5	22	100
30412	10	R ^{1/8}	8	20	32,5	12	100
30413	10	R ^{1/4}	11	20	36	14	100
30414	10	R ^{3/8}	11,5	20	36,5	17	100
30415	10	R ^{1/2}	14	20	39,5	22	100
30416	12	R ^{1/4}	11	20	36	14	50
30417	12	R ^{3/8}	11,5	20	36,5	17	50
30418	12	R ^{1/2}	14	20	39,5	22	50
30419	14	R ^{3/8}	11,5	22	38,5	17	50
30420	16	R ^{3/8}	11,5	22	38,5	17	50
30421	14	R ^{1/2}	14	22	41,5	22	50
30422	16	R ^{1/2}	14	22	41,5	22	50
30426	17	R ^{1/2}	14	24	43,5	22	50
30427	18	R ^{1/2}	14	24	43,5	22	50

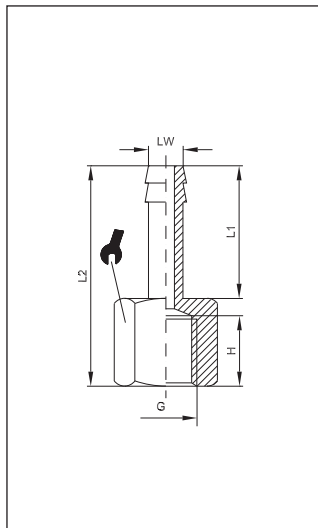


119/z

Hadicový nátrubok s vonkajším závitom

Male hose adapter cyl.

VT	LW	G	H	L1	L2		
30454	7	G ^{1/8}	6	19	29,5	12	100
30455	7	G ^{1/4}	8	19	32	14	100
30456	8	G ^{1/8}	6	19	29,5	12	100
30457	12	G ^{3/8}	9	20	34	19	100
30458	12	G ^{1/2}	10	20	35,5	22	100
30459	9	G ^{1/4}	8	19	33	14	100
30460	9	G ^{1/8}	6	19	29,5	12	100
30462	9	G ^{3/8}	9	19	33	19	100
30461	12	G ^{1/4}	8	20	33	14	50



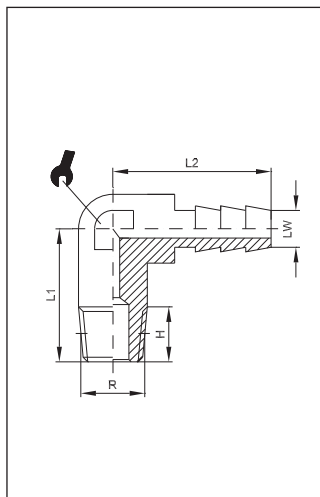
122

Hadicový nátrubok s vnútorným závitom

Female hose adapter

fluid division
VT-HADICE & PLAST

VT	LW	G	H	L1	L2		
30502	6	G ^{1/8}	8,5	19,5	30	14	100
30503	7	G ^{1/8}	8,5	19,5	30	14	100
30513	7	G ^{1/4}	11	19,5	32,5	17	100
30504	8	G ^{1/4}	11	19,5	32,5	17	100
30505	9	G ^{1/4}	11	19,5	32,5	17	100
30507	10	G ^{3/8}	11,5	19,5	33,5	20	100
30510	12	G ^{3/8}	11,5	19,5	33,5	20	100
30511	12	G ^{1/2}	14,5	19,5	37,5	24	100

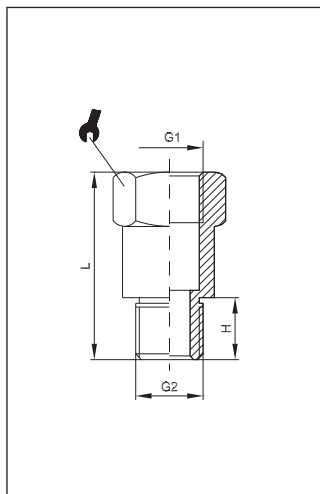


121

L-hadícový nátrubok s vonkajším závitom

Elbow connector for tubes

VT	R	LW	H	L1	L2		
51000	R ^{1/8}	6	8	18,5	21,5	9	100
51001	R ^{1/8}	9	11	20	24	11	100
51002	R ^{1/4}	6	11	22	22,5	10	100
51003	R ^{1/4}	8	11	22	22,5	10	100
51004	R ^{1/4}	9	11	22	24	11	100

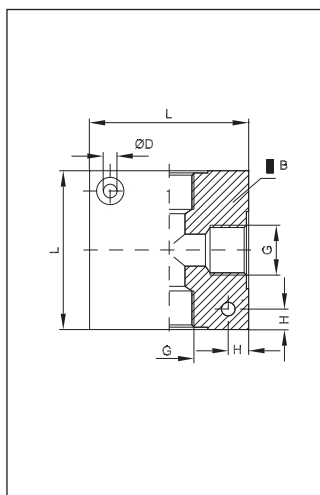


123

Predĺženie

Extension cyl.

VT	G1	G2	H	L		
20702	G ^{1/8}	G ^{1/8}	6	22	14	100
20703	G ^{1/8}	G ^{1/8}	6	42	14	100
20704	G ^{1/4}	G ^{1/4}	8	35	17	100
20705	G ^{1/4}	G ^{1/4}	8	51	17	100

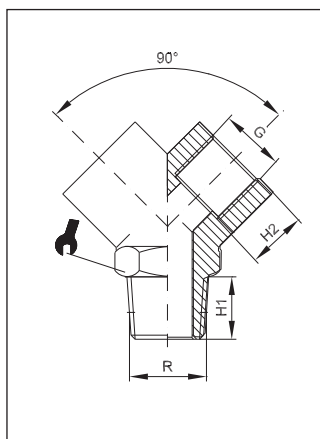


124

Hliníkový kríž

Aluminium cross manifold

VT	G	ØD	B	H	L	
60402	G ^{1/8}	4,5	15	4	25	25
60403	G ^{1/4}	5,5	20	7	40	25
60404	G ^{3/8}	5,5	25	8	50	25
60405	G ^{1/2}	5,5	30	8	50	25



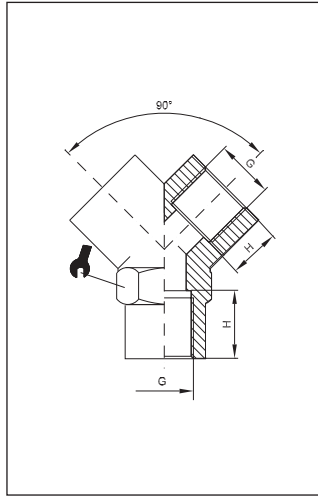
125

Y-spojka

M/F Y-connector con.

fluid division
VT-HADICE & PLAST

VT	R	G	H1	H2		
60002	R ^{1/8}	G ^{1/8}	8	8	13	50
60003	R ^{1/4}	G ^{1/4}	11	11	17	50
60004	R ^{3/8}	G ^{3/8}	11,5	11,5	20	25
60005	R ^{1/2}	G ^{1/2}	14	14	25	25

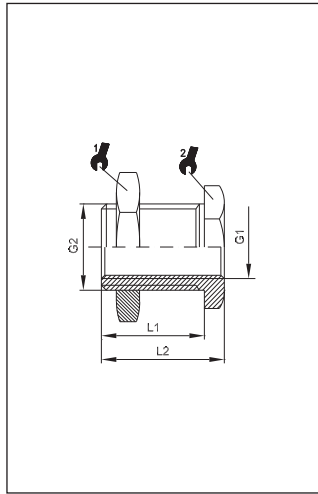


126

Y-spojka

Female Y-connector

VT	G	H		
60102	G ¹ / ₈	8	13	50
60103	G ¹ / ₄	11	17	50
60104	G ³ / ₈	11,5	20	25
60105	G ¹ / ₂	14	25	25

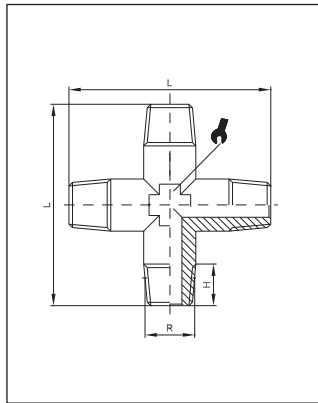


127

Panelová spojka

Bulkhead union

VT	G1	G2	L1	L2			
30601-1	M5	M10x1	10,5	14	14	14	100
30602-1	G ¹ / ₈	M16x1,5	14	18	22	19	100
30603-1	G ¹ / ₄	M20x1,5	21	25	27	24	100
30604-1	G ³ / ₈	M26x1,5	21	26	32	30	50
30605-1	G ¹ / ₂	M28x1,5	27	33	36	32	25

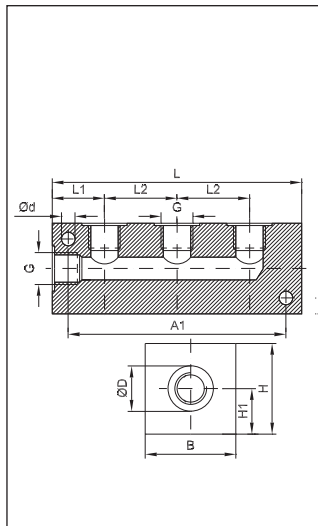


128

Križ

Male cross

VT	R	H	L		
60302	R ¹ / ₈	8	35	11	25
60303	R ¹ / ₄	11	47	13	25
60304	R ³ / ₈	11,5	52	17	25
60305	R ¹ / ₂	14	58	20	25



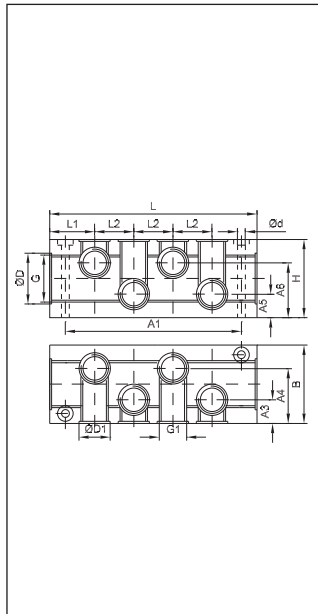
129

Rozvádzačia kocka s tromi pripojeniami

3-connection block

fluid division
VT-HADICE & PLAST

VT	G	ØD	H	B	L	L1	L2	
12900	M5	8,5	15	15	40	10	10	10
12901	G ¹ / ₈	14,5	20	20	56	13,5	17	10
12902	G ¹ / ₄	19	30	30	89	20	29	5
12903	G ³ / ₈	23	40	30	85	20	26	5
12904	G ¹ / ₂	27,5	40	30	105	25	32	1
	H1	A1	Ød					
12900	5	32	3,4					
12901	8	46	4,4					
12902	13	74	6,4					
12903	21	72	6,4					
12904	18	90	6,4					



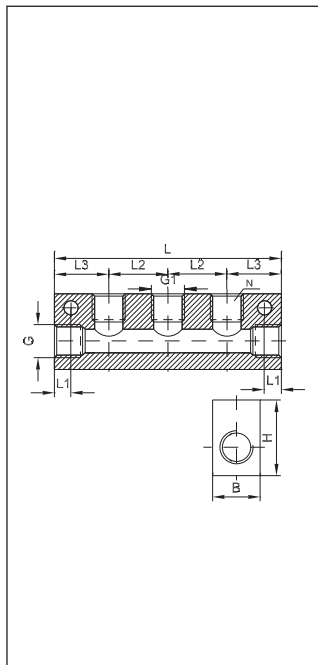
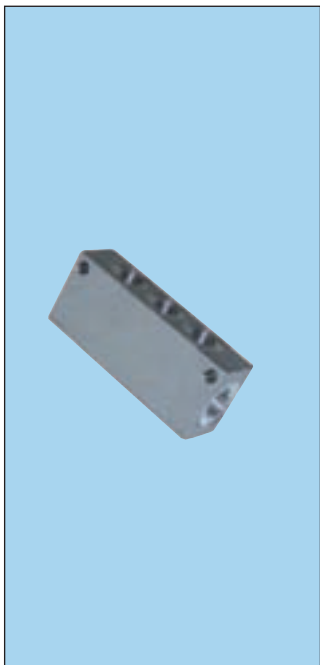
130

Rozvádzačia kocka s 8 pripojeniami

8-connection block

VT	G	ØD	G1	ØD1	B	H	L	L1	■
60311	G ¹ / ₄	19	M5	8,5	32	25	65	17,5	10
60312	G ³ / ₈	23	G ¹ / ₈	14,5	40	30	114	22,5	5
60313	G ¹ / ₂	27,5	G ¹ / ₄	19	50	35	144	28,5	1
60314	G ³ / ₄	34	G ¹ / ₂	27,5	60	45	170	31	1

	L2	A1	A3	A4	A5	A6	Ød
60311	10	50	12,5	19,5	8,5	16,5	4,4
60312	23	100	16,5	24,5	10,5	19,5	6,5
60313	29	128	20,5	29,5	13	22	6,5
60314	36	150	27	33	19,5	25,5	8,5

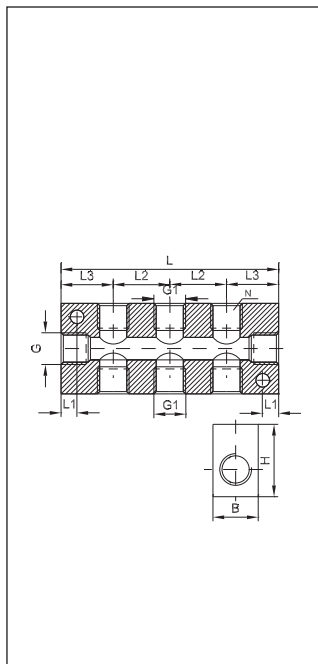


131

Rozvádzačia kocka

Through-going block

VT	G	G1	B	H	L1	L2	L3	L	N	■
60411	G ¹ / ₄	G ¹ / ₈	20	30	4,5	18	18	54	2	10
60412	G ¹ / ₄	G ¹ / ₈	20	30	4,5	18	18	72	3	10
60413	G ¹ / ₄	G ¹ / ₈	20	30	4,5	18	18	90	4	10
60414	G ¹ / ₄	G ¹ / ₈	20	30	4,5	18	18	108	5	5
60415	G ³ / ₈	G ¹ / ₄	25	40	8,5	24	22	68	2	5
60416	G ³ / ₈	G ¹ / ₄	25	40	8,5	24	22	92	3	5
60417	G ³ / ₈	G ¹ / ₄	25	40	8,5	24	22	116	4	5
60418	G ³ / ₈	G ¹ / ₄	25	40	8,5	24	22	140	5	5



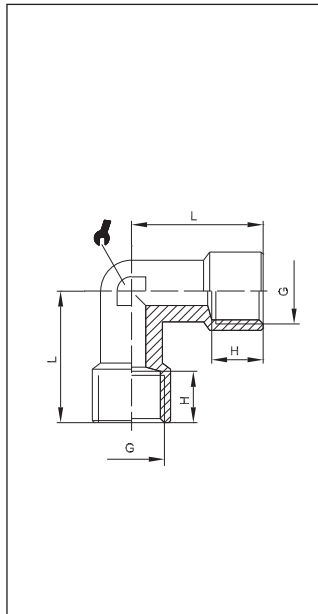
132

Rozvádzačia kocka

Through-going block

fluid division
VT-HADICE & PLAST

VT	G	G1	B	H	L1	L2	L3	L	N	■
61411	G ¹ / ₄	G ¹ / ₈	20	30	4,5	18	18	54	2+2	10
61412	G ¹ / ₄	G ¹ / ₈	20	30	4,5	18	18	72	3+3	10
61413	G ¹ / ₄	G ¹ / ₈	20	30	4,5	18	18	90	4+4	10
61414	G ¹ / ₄	G ¹ / ₈	20	30	4,5	18	18	108	5+5	5
61415	G ³ / ₈	G ¹ / ₄	25	40	8,5	24	22	68	2+2	5
61416	G ³ / ₈	G ¹ / ₄	25	40	8,5	24	22	92	3+3	5
61417	G ³ / ₈	G ¹ / ₄	25	40	8,5	24	22	116	4+4	5
61418	G ³ / ₈	G ¹ / ₄	25	40	8,5	24	22	140	5+5	5

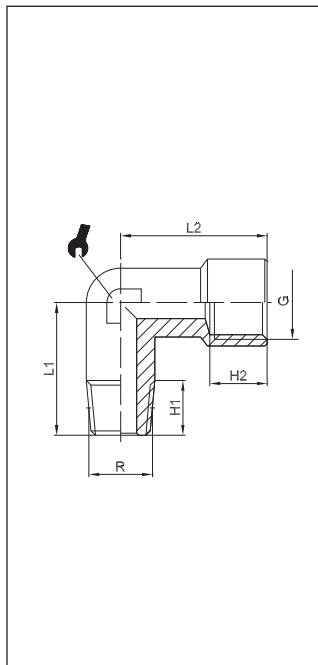


109 blank

L-kus

Female elbow

VT	G	H	L		
R50102	G ¹ / ₈	8	21	10	100
R50103	G ¹ / ₄	11	25,5	13	50
R50104	G ³ / ₈	11,5	28	17	25
R50105	G ¹ / ₂	14	33,5	21	25
R50106	G ³ / ₄	16,5	36,5	25	25
R50107	G1	19	45	30	25

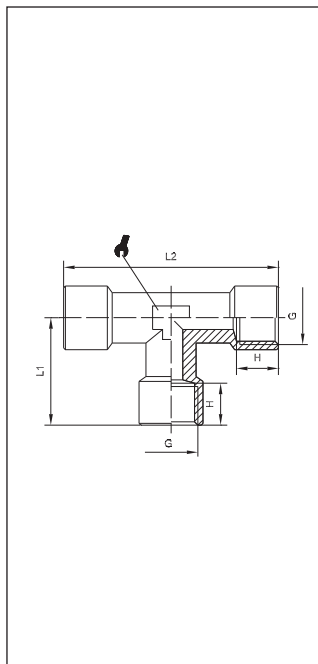


110 blank

L-kus

Male-female elbow

VT	R	G	H1	H2	L1	L2		
R50202	R ¹ / ₈	G ¹ / ₈	8	8	18,5	21	10	100
R50203	R ¹ / ₄	G ¹ / ₄	11	11	23,5	25,5	13	50
R50204	R ³ / ₈	G ³ / ₈	11,5	11,5	26	28	17	25
R50205	R ¹ / ₂	G ¹ / ₂	14	14	31	33,5	21	25
R50206	R ³ / ₄	G ³ / ₄	16	16,5	33	36,5	25	10
R50207	R1	G1	17	19	39	45	30	10



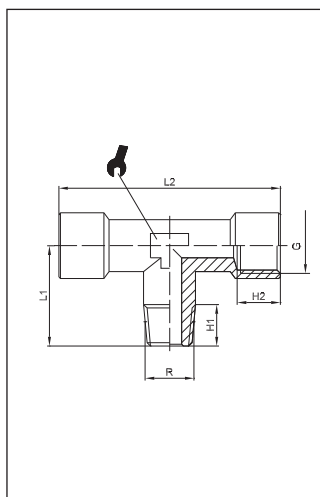
111 blank

T-kus

Female T

VT	G	H	L1	L2		
R40003	G ¹ / ₈	8	21	42	10	100
R40004	G ¹ / ₄	11	25,5	51	13	50
R40005	G ³ / ₈	11,5	28	56	17	25
R40006	G ¹ / ₂	15	33,5	67	21	25
R40007	G ³ / ₄	16,5	36,5	73	25	10
R40008	G1	19	45	90	30	10

fluid division
VT-HADICE & PLAST

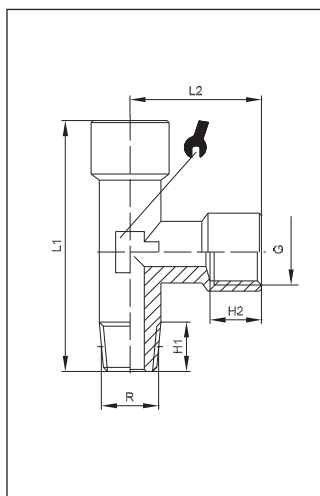


112 blank

T-kus s vonkajším kuželovým závitom zdola

Centre male Tee, con.

VT	R	G	H1	H2	L1	L2		
R40402	R ^{1/8}	G ^{1/8}	8	8	18,5	42	10	100
R40403	R ^{1/4}	G ^{1/4}	11	11	23,5	51	13	50
R40404	R ^{3/8}	G ^{3/8}	11,5	11,5	26	56	17	25
R40405	R ^{1/2}	G ^{1/2}	14	14	31	67	21	25
R40406	R ^{3/4}	G ^{3/4}	16	16,5	33	73	25	10
R40407	R1	G1	17,5	19	39	90	30	10

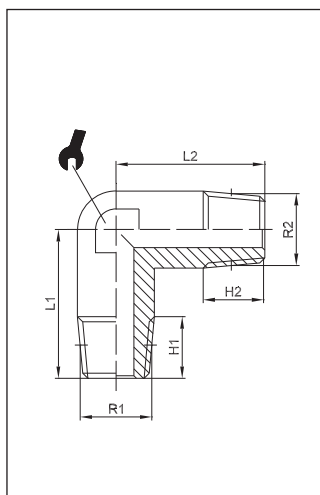


113 blank

T-kus s vonkajším kuželovým závitom zbokú

Off-set male T-MFF, con.

VT	R	G	H1	H2	L1	L2		
R40502	R ^{1/8}	G ^{1/8}	8	8	39,5	21	10	100
R40503	R ^{1/4}	G ^{1/4}	10	11,5	49	25,5	13	50
R40504	R ^{3/8}	G ^{3/8}	11,5	11,5	54	28	17	25
R40505	R ^{1/2}	G ^{1/2}	14,5	14	64,5	33	21	25
R40506	R ^{3/4}	G ^{3/4}	16	15,5	69,5	36,5	25	10
R40507	R1	G1	17,5	16,5	87	45	30	10

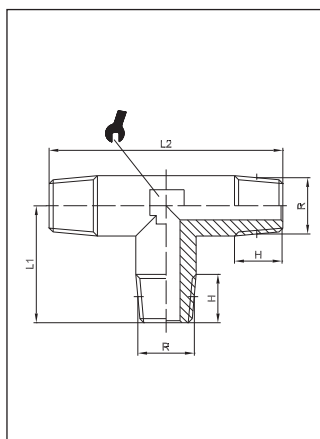


115 blank

L-kus

Male elbow, con.

VT	R1	R2	H1	H2	L1	L2		
R50002	R ^{1/8}	R ^{1/8}	8	8	18,5	18,5	10	100
R50003	R ^{1/4}	R ^{1/4}	11	11	23,5	23,5	13	50
R50004	R ^{3/8}	R ^{3/8}	11,5	11,5	26	26	17	25
R50005	R ^{1/2}	R ^{1/2}	14	14	31	31	21	25
R50006	R ^{3/4}	R ^{3/4}	16	16	33	33	25	10
R50007	R1	R1	17	17	39	39	30	10



116 blank

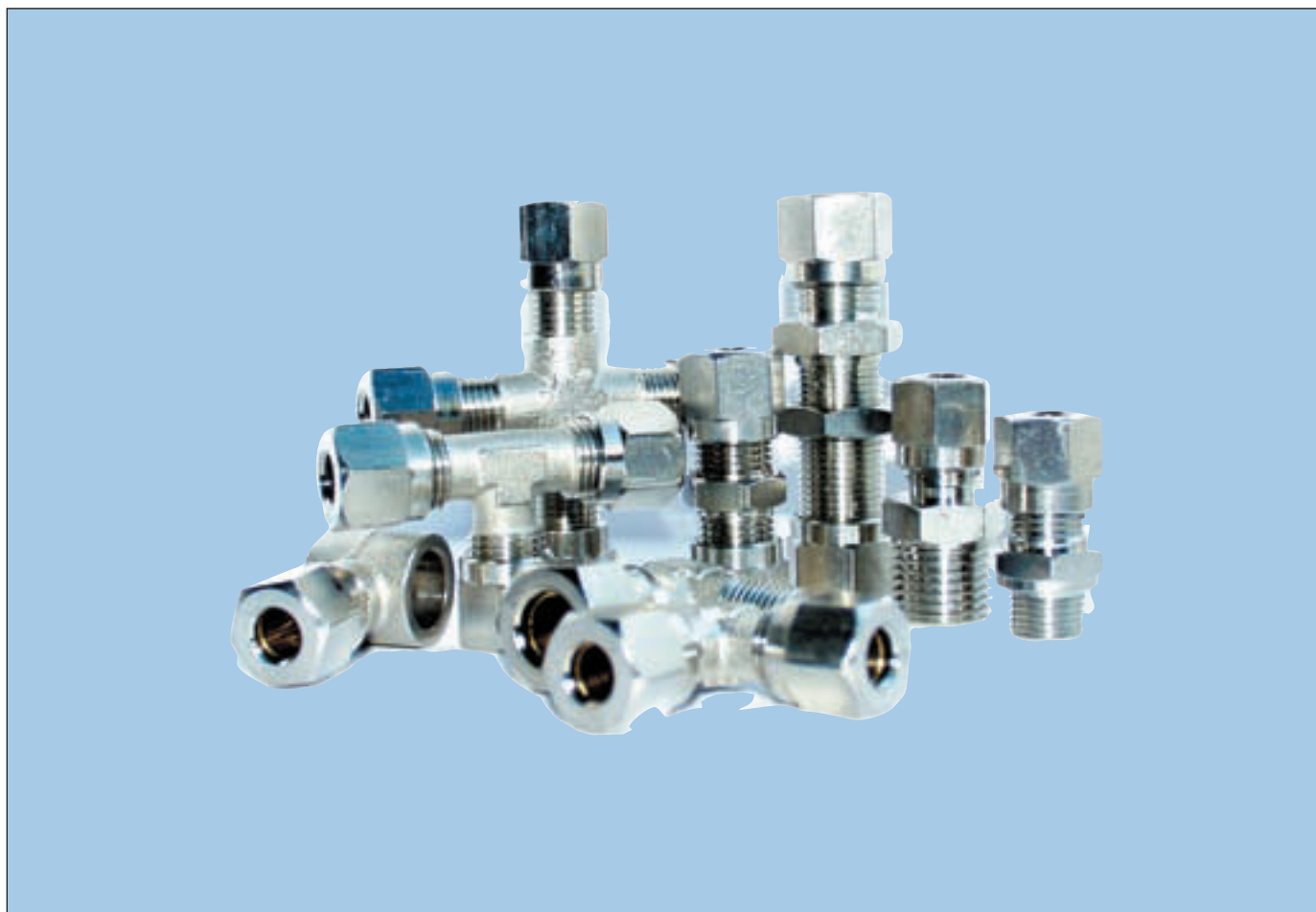
T-kus

Male Tee, con.

fluid division
VT-HADICE & PLAST

VT	R	H	L1	L2		
R40104	R ^{1/4}	11	23,5	47	13	50
R40105	R ^{3/8}	11,5	26	52	17	25
R40106	R ^{1/2}	14	31	62	21	25
R40107	R ^{3/4}	16	33	66,4	25	10
R40108	R1	17,5	39	78	30	10

Koncovky Typ 200 Compression Fittings Type 200

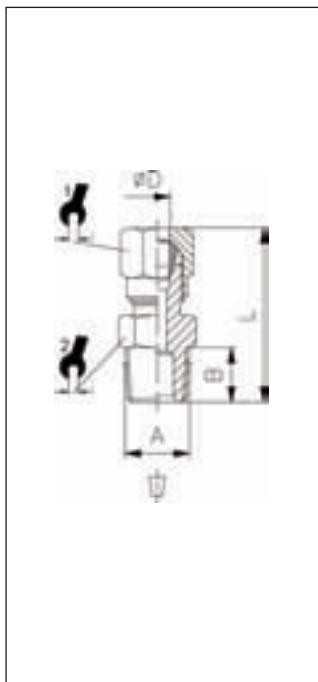


Funkcie

- ▶ **Mosadzné koncovky**
 - ▶ **Vysoká pružnosť z dôvodu použitia zárezného krúžku a matice**
 - ▶ **Zárezný krúžok podľa DIN 3861**
 - ▶ **Otočná matica podľa DIN 3870**
 - ▶ **Poniklovaná mosadz pre vyššiu korozivzdornosť**
 - ▶ **Pre trúbky v rozmeroch 4 až 18mm**
 - ▶ **Ripojovacie rozmery od 1/8" do 1/2"**
- ▶ **Brass fittings**
 - ▶ **High resilience due to cutting ring and nut**
 - ▶ **Cutting rings in line with DIN 3861**
 - ▶ **Swivel nuts in line with DIN 3870**
 - ▶ **Nickel-plating for corrosion protection**
 - ▶ **For pipe diameters from 4 mm to 18 mm**
 - ▶ **Connection sizes from 1/8" to 1/2"**

Technické údaje **Technical data**

Pracovná teplota	max. +150°C	Závisí od tlakového rozsahu trúbky/rúry a pracovne teploty
Pracovný tlak	až 60bar	
Materiály	Telo a matica z poniklovanej mosdze (Ms58) Zárezný krúžok z mosadze (Ms58) leštená	
Závit	Valcový závit DIN EN ISO 228 Kužeľový závit DIN EN 10226 (ISO7 / DIN 2999)	
Médium	Vzduch, olej, hydraulické okruhy	
Hadica/Rúrky	Vhodné pre oceľové trúbky (meď, mosadz, oceľ atď)	
Operating temperature	Up to 60 bar	Dependent on the pressure range of the tube/pipe used and the temperature used
Materials	Body and swivel nut, brass (Ms58), nickel-plated Cutting ring, brass (Ms58) polished	
Thread	Cyl. thread, DIN EN ISO 228 Con. thread, DIN EN 10226 (ISO7 / DIN 2999)	
Medium Tubes/pipes	Pneumatic, oil-hydraulic and hydraulic circuits Suitable for metal pipes (copper, brass, steel, etc.) and for plastic pipes with inner reinforcement	

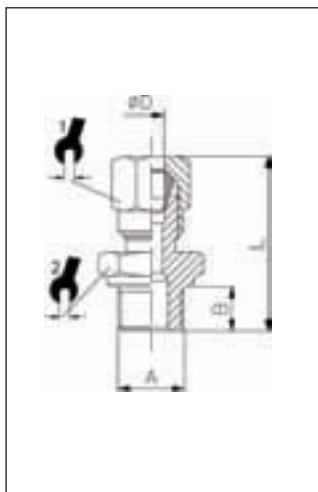


201

Priama spojka s kužel'ovým závitom

Straight male adaptor con.

VT	ØD	A	B	L			
94801	4	R ^{1/8}	8	27	10	10	100
94802	6	R ^{1/8}	8	28	12	12	100
94803	6	R ^{1/4}	11	32,5	12	14	100
94804	8	R ^{1/8}	8	29,5	14	12	100
94805	8	R ^{1/4}	11	33	14	14	100
94806	8	R ^{3/8}	11,5	33	14	17	100
94807	10	R ^{1/4}	11	37,5	19	17	100
94808	10	R ^{3/8}	11,5	38	19	17	100
94809	10	R ^{1/2}	14	40,5	19	22	50
94810	12	R ^{3/8}	11,5	39	22	19	50
94811	12	R ^{1/2}	14	41	22	22	50
94821	14	R ^{1/2}	14	42,5	27	22	50
94812	15	R ^{1/2}	14	42,5	27	22	50
94832	16	R ^{1/2}	14	42	30	24	25
94833	18	R ^{1/2}	14	43	32	26	25

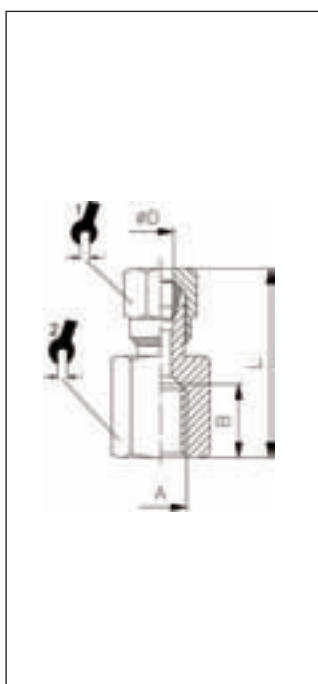


201/Z

Priama spojka

Straight male adaptor cyl.

VT	ØD	A	B	L			
94901	4	G ^{1/8}	6	25	10	14	100
94902	6	G ^{1/8}	6	26	12	13	100
94907	6	G ^{1/4}	8	29,5	12	17	100
94903	8	G ^{1/8}	6	27,5	14	14	100
94904	8	G ^{1/4}	8	30	14	17	50
94905	10	G ^{1/4}	8	34,5	19	17	50
94906	10	G ^{3/8}	9	36	19	19	50
94908	12	G ^{3/8}	10	40	22	22	50
94910	12	G ^{1/2}	12	42	22	27	50



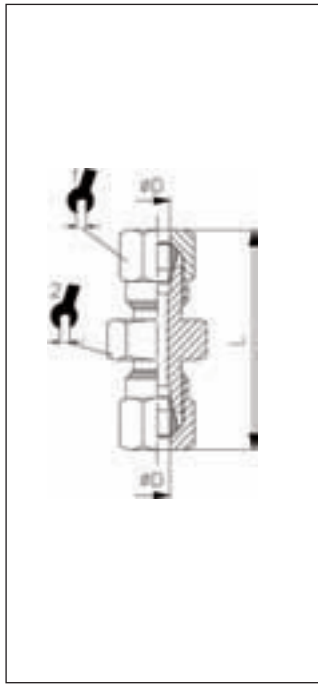
202

Priama spojka

Female straight adaptor

VT	ØD	A	B	L			
95000	4	G ^{1/8}	8	24,5	10	14	100
95001	6	G ^{1/8}	8,5	25,5	12	14	100
95002	6	G ^{1/4}	11	30	12	17	100
95003	8	G ^{1/8}	8	26,5	14	14	100
95004	8	G ^{1/4}	11	31	14	17	100
95005	8	G ^{3/8}	11,5	31	14	20	100
95006	10	G ^{1/4}	11	35,5	19	17	100
95007	10	G ^{3/8}	11,5	36,5	19	20	100
95008	12	G ^{3/8}	11,5	35	22	20	50
95009	12	G ^{1/2}	15	37	22	24	50
95010	14	G ^{1/2}	15	40	27	24	50
95011	15	G ^{1/2}	15	40	27	24	50
95012	16	G ^{1/2}	15	40,5	30	24	25
95013	18	G ^{1/2}	15	40	32	26	25

Typ 200

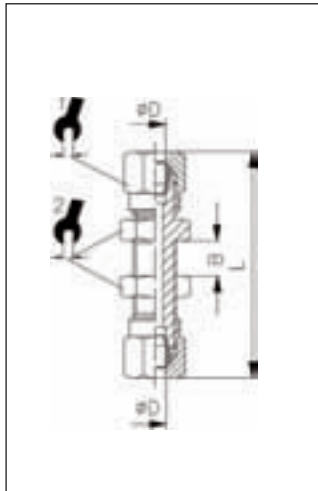


203

Priama spojka

Straight connector

VT	ØD	L			
94601	4	34	10	10	100
94602	6	35	12	12	100
94603	8	38,5	14	14	100
94604	10	47,5	19	17	100
94605	12	46	22	19	50
94615	14	53	27	24	50
94606	15	50	27	24	50
94611	16	53,5	30	27	25
94612	18	53	32	27	25

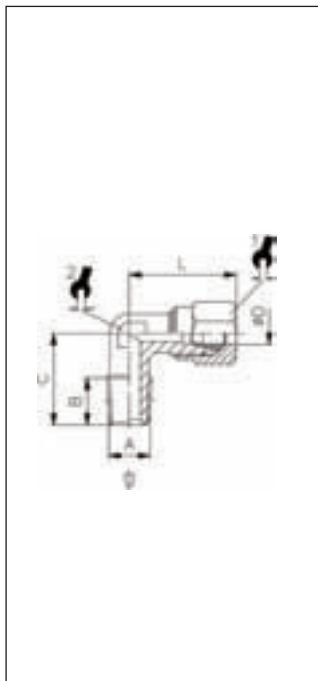


204

Panelová spojka

Bulkhead union

VT	ØD	B	L			
94701	6	15,5	51,5	12	14	100
94702	8	16,5	55,5	14	16	100
94703	10	15,5	62,5	19	19	50
94704	12	16,0	64,5	22	22	50
94705	15	18,0	69,5	27	25	50

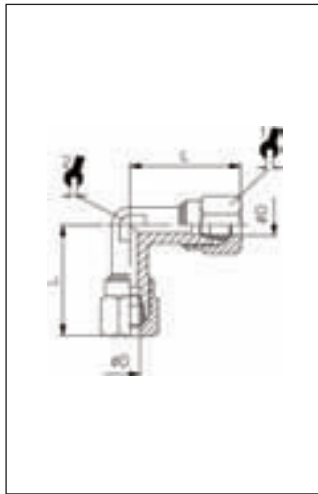


205

L - kus

Elbow male adaptor con.

VT	ØD	A	B	C	L			
92801	4	R ^{1/8}	8	16	21	10	9	100
92802	6	R ^{1/8}	8	16	22	12	9	100
92803	6	R ^{1/4}	11	20	24,5	12	11	100
92804	8	R ^{1/8}	8	17	24	14	11	100
92805	8	R ^{1/4}	11	20	24	14	11	100
92806	8	R ^{3/8}	11,5	24	27	14	13	100
92807	10	R ^{1/4}	11	23,5	32	19	13	100
92808	10	R ^{3/8}	11,5	24	32	19	13	100
92809	10	R ^{1/2}	14	28,5	34	19	15	50
92810	12	R ^{3/8}	11,5	25,5	34,5	22	15	50
92811	12	R ^{1/2}	14	28,5	34,5	22	15	50
92821	14	R ^{1/2}	14	30	38	27	17	50
92812	15	R ^{1/2}	14	30	38	27	17	50
92813	16	R ^{1/2}	14	31,5	39,5	30	19	25
92814	18	R ^{1/2}	14	34	44	32	22	25

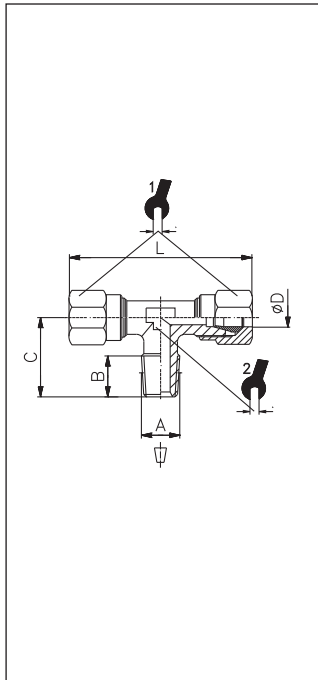


206

L - kus

Elbow connector

VT	ØD	L			
92601	4	21	10	9	100
92602	6	23	12	9	100
92603	8	24	14	11	100
92604	10	32	19	13	50
92605	12	34,5	22	15	50
92615	14	38	27	17	25
92606	15	38	27	17	25
92607	16	39,5	30	19	25
92608	18	44	32	22	25

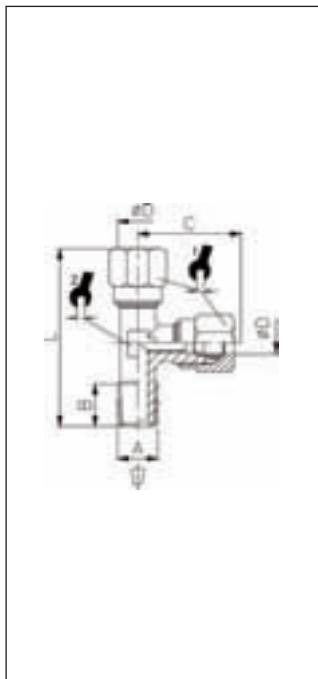


207

T - kus s vonkajším závitem zdola

Centre male T-adaptor

VT	ØD	A	B	C	L			
92201	4	R ^{1/8}	8	16	42	10	9	100
92202	6	R ^{1/8}	8	16	46	12	9	100
92203	6	R ^{1/4}	11	20	48	12	11	100
92204	8	R ^{1/8}	8	17	48	14	11	100
92205	8	R ^{1/4}	11	20	48	14	11	100
92206	8	R ^{3/8}	11,5	24	54	14	13	100
92207	10	R ^{1/4}	11	23,5	64	19	13	100
92208	10	R ^{3/8}	11,5	24	64	19	13	100
92210	12	R ^{3/8}	11,5	25,5	69	22	15	50
92211	12	R ^{1/2}	14	28,5	69	22	14	50
92221	14	R ^{1/2}	14	30	76	27	17	50
92212	15	R ^{1/2}	14	30	76	27	17	50
92213	16	R ^{1/2}	14	31,5	79	30	19	50
92214	18	R ^{1/2}	14	34	88	32	22	25

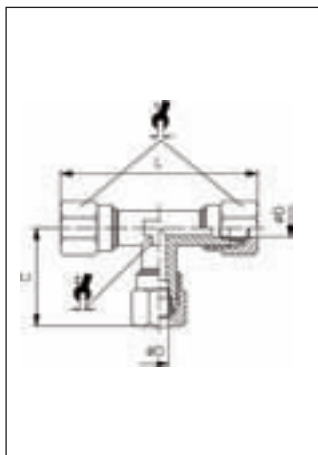


208

T - kus s vonkajší závitem zбоку

Off-set male adaptor con.

VT	ØD	A	B	C	L			
92300	4	R ^{1/8}	8	21	37	10	9	100
92301	6	R ^{1/8}	8	23	39	12	9	100
92302	6	R ^{1/4}	11	24,5	44,5	12	11	100
92303	8	R ^{1/8}	8	24	41	14	11	100
92304	8	R ^{1/4}	11	24	44	14	12	100
92305	8	R ^{3/8}	11,5	27	51	14	13	100
92306	10	R ^{1/4}	11	32	55,5	19	13	100
92307	10	R ^{3/8}	11,5	32	56	19	13	100
92309	12	R ^{3/8}	11,5	34,5	60	22	15	50
92310	12	R ^{1/2}	14	34,5	63	22	15	50
92314	14	R ^{1/2}	14	38	68	27	17	50
92311	15	R ^{1/2}	14	38	68	27	17	50
92312	16	R ^{1/2}	14	39,5	71	30	19	50
92313	18	R ^{1/2}	14	44	78	32	22	25

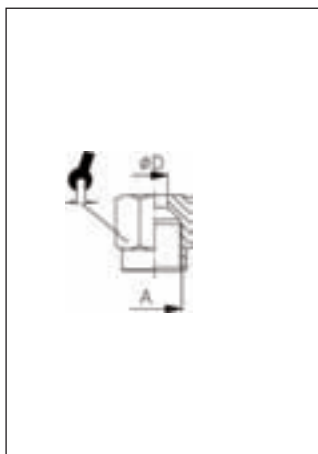


209

T - kus

T-connector

VT	ØD	C	L			
92001	4	21	42	10	9	50
92002	6	23	46	12	9	50
92003	8	24	48	14	11	50
92004	10	32	64	19	13	50
92005	12	34,5	69	22	15	50
92015	14	38	76	27	17	50
92006	15	38	76	27	17	50
92007	16	39,5	79	30	19	25
92008	18	44	88	32	22	25

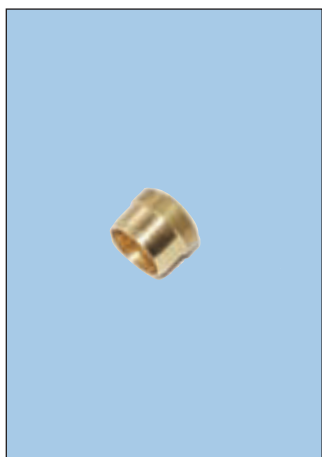


210

Matica

Nut

VT	ØD	A		
96801	4	M8x1	10	100
96802	6	M10x1	12	100
96803	8	M12x1	14	100
96804	10	M16x1,5	19	100
96805	12	M18x1,5	22	100
96806	14	M22x1,5	27	100
96807	15	M22x1,5	27	100
96808	16	M24x1,5	30	50
96809	18	M26x1,5	32	50



211

Zárezný prsteň

Olive

VT	ØD	
97401	4	100
97402	6	100
97403	8	100
97404	10	100
97405	12	100
97406	14	100
97407	15	100
97408	16	50
97409	18	50

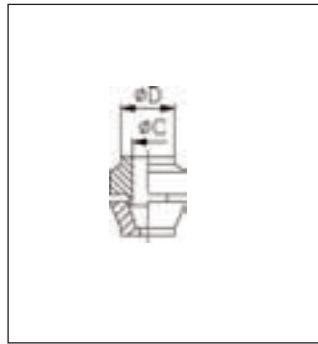
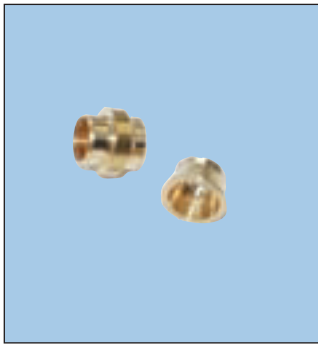


212

Púzdro

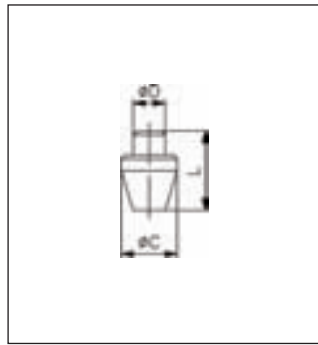
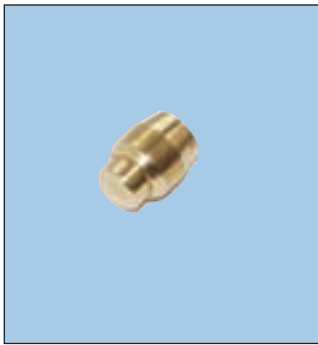
Support bush

VT	ØD	
97506	2	100
97501	4	100
97502	6	100
97503	8	100
97508	9	100
97504	10	100
97510	11	100
97505	12	100
97509	18	100
97507	14	100



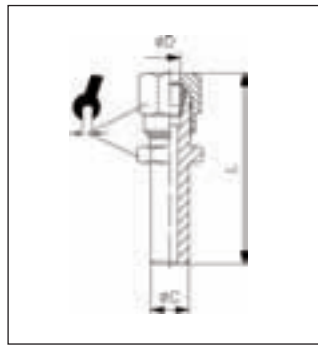
213
Redukcia
Reduction

VT	ØD	ØC	
97511	6	4	100
97512	8	6	100
97513	12	8	100



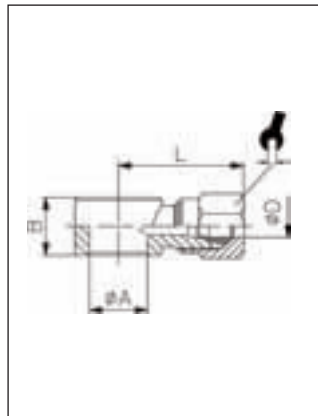
214
Zátka
Plug

VT	ØD	ØC	L	
97520	4	6	7,5	100
97521	6	8	10	100



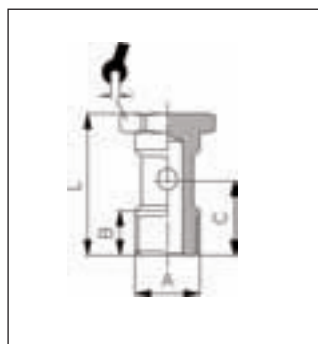
215
Priama prechodka
Adaptor

VT	ØD	ØC	L		
97533	6	8	34	12	100
97534	8	10	41	12	100



216
Prietokové oko
Single banjo body

VT	ØD	G	ØA	B	L		
95101	4	G ^{1/8}	10	14,5	24,5	10	100
95102	6	G ^{1/8}	10	14,5	26,5	12	100
95103	6	G ^{1/4}	13	14,5	28,5	12	100
95104	8	G ^{1/8}	10	14,5	25,5	14	100
95105	8	G ^{1/4}	13	14,5	28	14	100



407
Prietoková skrutka
Single screw

VT	A	B	C	L		
14102	G ^{1/8}	7,5	15	28	14	50
14103	G ^{1/4}	9	16,5	29,5	17	50

Koncovky Typ 300 a 400

Push-on fittings Type 300 and 400

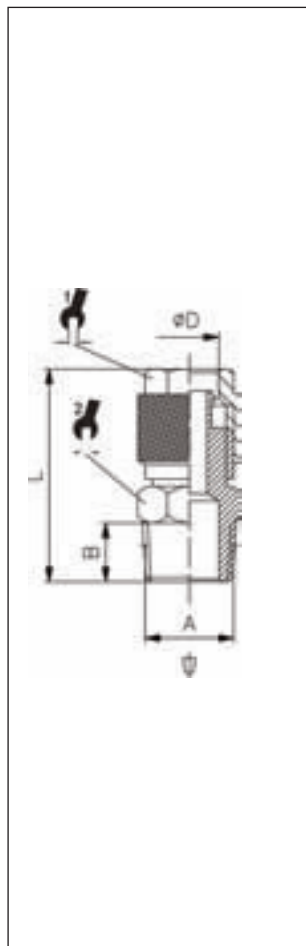


Funkcie

- ▶ **Mosadzné koncovky**
 - ▶ **Poniklovanie pre zvýšenu korozivzdornosť**
 - ▶ **Pre rôzne aplikácie**
 - ▶ **Rotačné koncovky, uťahovacie koncovky**
 - ▶ **O krúžok na tesnenie**
 - ▶ **pre trúbky s priemerom od 4 do 12mm**
- ▶ **Brass fittings**
 - ▶ **Nickel-plated for corrosion protection**
 - ▶ **For various applications**
 - ▶ **Rotating fittings, tilting fittings**
 - ▶ **O-ring seal in parts**
 - ▶ **For tube diameters from 4 mm to 12 mm**

Technické údaje **Technical data**

Pracovní teplota	až +80°C	závisí od teplotných vlastností použitej trúbky
Pracovní tlak	až 20bar	závisí od tlakového rozsahu použitej trúbky
Materiály	Körper und Überwurfmutter Messing (Ms58) vernickelt O-Ringe aus NBR Dichtungen aus PVC	
Závit	Valcový závit DIN EN ISO 228 Kuželový závit DIN EN 10226 (DIN 2999) metr. závit DIN ISO 262	Valcové tesnenie s O krúžkom
Médium	vzduch, olej ,hydraulické okruhy	
Hadica	pre rôzne plastové trúbky	auch für PVU syntheseffadenarmiert
Operating temperature	Up to +80°C	Dependent on the tube's temperature characteristics
Operating pressure	Up to 20 bar	Dependent on the pressure range of the tube used
Materials	Body and swivel nut, brass (Ms58), nickel-plated NBR O-rings PVC seals	
Thread	Cyl. thread, DIN EN ISO 228 Con. thread, DIN EN 10226 (DIN 2999) Metr. Thread, DIN ISO 262	Cylindrical with O-ring seal
Medium	Pneumatic, oil-hydraulic and hydraulic circuits	
Tubes	Suitable for various plastic tubes	Vhodné pre PVU trúbky -spevnené textilným vláknom

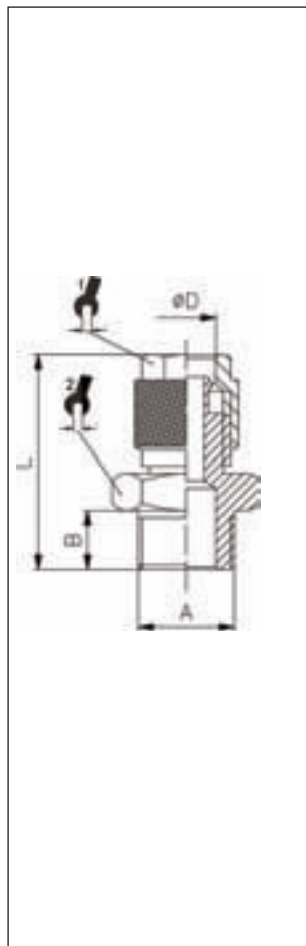


301

Priama prechodka s kuž. závitom

Taper straight male adaptor

VT	ØD	A	B	L			
10003	4/2,7	R ¹ / ₈	7,5	23	8	12	100
10004	5/3	R ¹ / ₈	7,5	23	8	12	100
10005	6/4	R ¹ / ₈	7,5	25,5	10	12	100
10006	6/4	R ¹ / ₄	11	27	10	14	100
10007	8/6	R ¹ / ₈	7,5	27	12	14	100
10008	8/6	R ¹ / ₄	11	31	12	14	100
10009	8/6	R ³ / ₈	11,5	31,5	12	17	100
10010	8/6	R ¹ / ₂	14	34	12	22	100
10011	10/8	R ¹ / ₈	7,5	29	14	14	100
10012	10/8	R ¹ / ₄	11	33	14	14	100
10013	10/8	R ³ / ₈	11,5	33,5	14	17	100
10014	10/8	R ¹ / ₂	14	36,5	14	22	50
10015	12/10	R ³ / ₈	11,5	35	15	17	50
10016	12/10	R ¹ / ₂	14	38	15	22	50
10017	15/12,5	R ¹ / ₂	14	40	22	22	50



301/Z

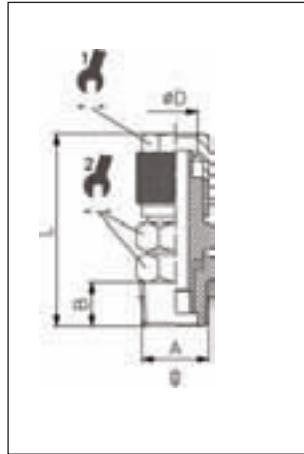
Priama prechodka

Straight male adaptor, cyl.

*s O kružkom *with O-ring

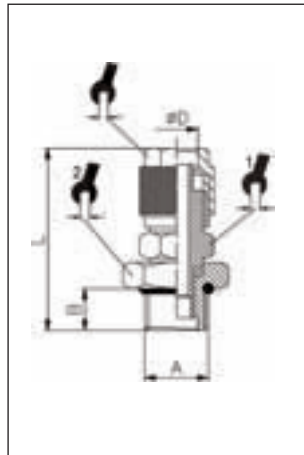
VT	ØD	A	B	L			
10202	4/2,7	M5	4	19,5	7	8	100 *
10224	4/2,7	G ¹ / ₈	6	25	7	13	100 *
10203	4,3/3	M5	4	19,5	8	8	100
10204	4,3/3	G ¹ / ₈	6	25	8	13	100 *
10205	5/3	M5	4	22	8	8	100
10207	5/3	G ¹ / ₈	6	25	8	13	100 *
10208	6/4	M5	4	22	8	9	100
10209	6/4	G ¹ / ₈	6	25	10	13	100
10210	6/4	G ¹ / ₄	8	27	10	17	100
10211	6/4	G ³ / ₈	9	27,5	10	19	100 *
10225	6/4	G ¹ / ₂	10	30	10	24	100 *
10212	8/6	G ¹ / ₈	6	25	12	14	100
10213	8/6	G ¹ / ₄	8	27	12	17	100
10214	8/6	G ³ / ₈	9	30	12	19	100
10215	8/6	G ¹ / ₂	10	30	12	24	100 *
10226	10/8	G ¹ / ₈	6	27,5	14	14	50
10216	10/8	G ¹ / ₄	8	30	14	17	50
10217	10/8	G ³ / ₈	9	31	14	19	50
10218	10/8	G ¹ / ₂	10	32,5	14	24	50 *
10219	12/10	G ³ / ₈	9	32,5	15	19	50 *
10220	12/10	G ¹ / ₂	10	34	15	24	50 *
10221	15/12,5	G ¹ / ₂	10	34	22	24	50 *
10222	12/9	G ¹ / ₄	8	31	15	17	50
10223	12/9	G ³ / ₈	9	31	15	20	50

Typ 300 + 400

**301DK****Priama prechodka otočná**

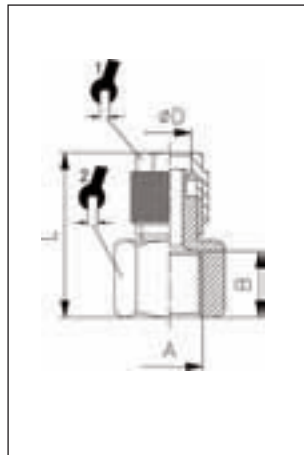
Swivel straight taper adaptor

VT	ØD	A	B	L			
10101	6/4	R ¹ / ₈	7,5	32,5	10	12	100
10102	6/4	R ¹ / ₄	11,0	36,5	10	14	100
10103	8/6	R ¹ / ₈	7,5	32,5	12	12	100
10104	8/6	R ¹ / ₄	11,0	36,5	12	14	100
10105	10/8	R ¹ / ₄	11,0	37,5	14	14	50
10106	12/10	R ³ / ₈	11,5	39,5	15	17	50

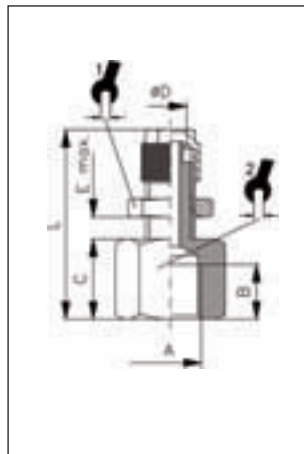
**301DZ****Priama prechodka otočná**

Swivel straight parallel adaptor with O-Ring

VT	ØD	A	B	L				
10151	6/4	G ¹ / ₈	6	31	10	12	14	100
10152	6/4	G ¹ / ₄	8	33,5	10	14	17	100
10154	8/6	G ³ / ₈	6	31	12	12	14	100
10155	8/6	G ¹ / ₄	8	33,5	12	14	17	100
10156	10/8	G ¹ / ₄	8	34,5	14	14	17	50
10157	12/10	G ³ / ₈	9	37	15	17	19	50

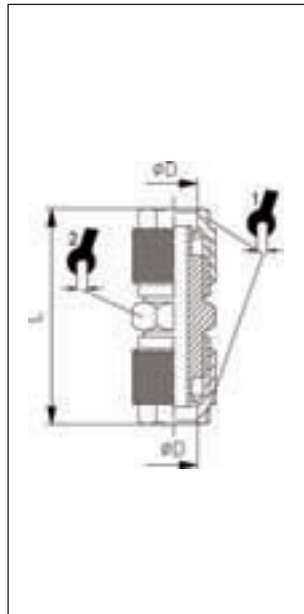
**302****Priama prechodka** | Straight female adaptor

VT	ØD	A	B	L			
10302	6/4	G ¹ / ₈	7,5	23,5	10	14	100
10303	6/4	G ¹ / ₄	11	27	10	17	100
10304	6/4	G ³ / ₈	11,5	28	10	22	100
10314	6/4	G ¹ / ₂	11	26,5	10	24	100
10305	8/6	G ¹ / ₈	7,5	24,5	12	14	100
10306	8/6	G ¹ / ₄	11	28,5	12	17	100
10307	8/6	G ³ / ₈	11,5	29	12	22	100
10308	8/6	G ¹ / ₂	15	33	12	24	100
10310	10/8	G ¹ / ₄	11	30,5	14	17	100
10311	10/8	G ³ / ₈	11,5	33,5	14	22	50
10312	10/8	G ¹ / ₂	15	34,5	14	24	50
10313	12/10	G ³ / ₈	11,5	31	15	22	50

**302F****Priama prechodka s aretačnou maticou**

Straight female adaptor (special)

VT	ØD	A	B	C	E	L			
10520	5/3	M5	4,5	8	8	29	8	9	100
10521	6/4	G ¹ / ₈	8,0	12	10	38	10	13	100
10522	8/6	G ¹ / ₈	12,0	12	10	39	12	17	100
10523	8/6	G ¹ / ₄	12,0	18	10	45	12	17	100
10524	12/9	G ¹ / ₄	12,0	18	10	47	15	22	50
10525	8/6	G ³ / ₈	12,0	19	10	46	12	17	50
10526	12/9	G ³ / ₈	12,0	19	10	51	15	22	25

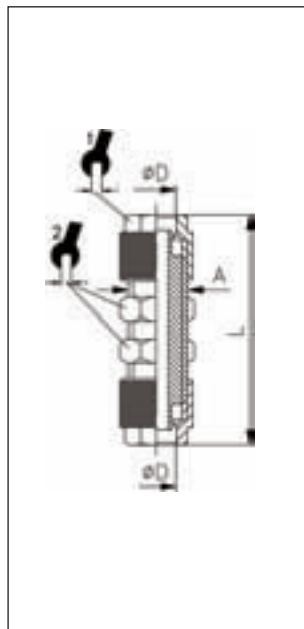


303

Priama spojka

Straight connector

VT	ØD	L			
10403	4/2,7	27,5	7	8	100
10404	5/3	31,5	8	10	100
10405	6/4x5/3	32	10	12	100
10406	6/4	32	10	12	100
10407	8/6x6/4	35,5	12	12	100
10408	8/6	35	12	12	100
10409	10/8x6/4	35,5	14	14	100
10410	10/8x8/6	37	14	14	100
10411	10/8	39	14	14	100
10412	12/10	43	15	17	50
10413	15/12,5	47	22	22	50

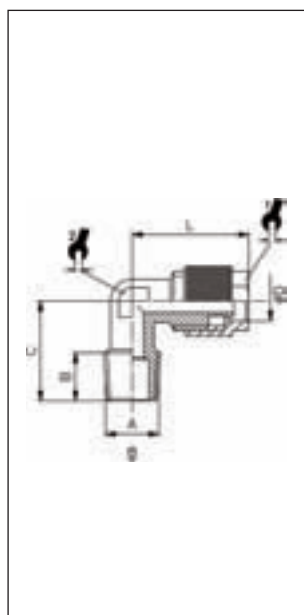


304

Panelová spojka

Bulkhead union

VT	ØD	A	L			
10501	4/2,7	M6x0,5	39,5	7	9	100
10502	5/3	M7x0,75	39,5	8	9	100
10503	6/4x5/3	M10x1	45,5	10	14	100
10504	6/4	M10x1	45	10	14	100
10505	8/6x6/4	M12x1	47,5	12	17	100
10506	8/6	M12x1	48,5	12	17	100
10507	10/8x6/4	M14x1	50	14	17	100
10508	10/8x8/6	M14x1	51	14	17	100
10509	10/8	M14x1	54	14	17	100
10510	12/10	M16x1	57	15	19	50
10511	15/12,5	M20x1	59	22	24	50
10512	12/9	M16x1	58	15	19	50



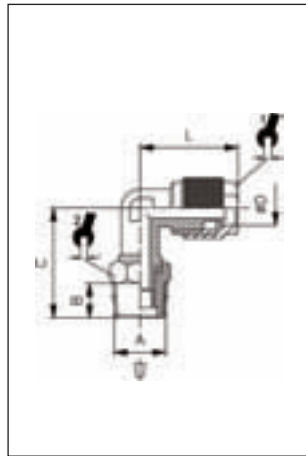
305

L - spojka

Elbow male adaptor, con.

VT	ØD	A	B	C	L			
11001	5/3	R ¹ / ₈	7,5	15	18,5	8	8	100
11003	6/4	R ¹ / ₈	8,5	17	21	10	8	100
11004	6/4	R ¹ / ₄	11	19	20,5	10	8	100
11006	8/6	R ¹ / ₈	8,5	17	20	12	9	100
11007	8/6	R ¹ / ₄	11	19	22	12	9	100
11008	8/6	R ³ / ₈	11	21	21	12	9	100
11009	8/6	R ¹ / ₂	14	28	23,5	12	16	50
11010	10/8	R ¹ / ₈	7,5	18	24	14	11	100
11011	10/8	R ¹ / ₄	11	22	24	14	11	100
11012	10/8	R ³ / ₈	11,5	22	25,5	14	11	50
11013	10/8	R ¹ / ₂	14	28	23,5	14	16	50
11014	12/10	R ³ / ₈	11,5	22,5	27	15	13	50
11015	12/10	R ¹ / ₂	14	28	27	15	16	50
11016	15/12,5	R ¹ / ₂	14	28	31,5	22	16	50

Typ 300 + 400

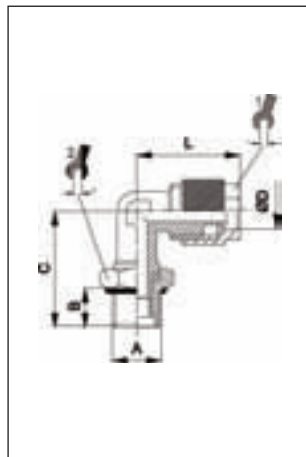


305DK

L - spojka

Swivel elbow male adaptor, con.

VT	ØD	A	B	C	L			
11101	6/4	R ¹ / ₈	7,5	21,5	20,5	10	12	100
11102	6/4	R ¹ / ₄	11	25	20,5	10	14	100
11103	8/6	R ¹ / ₈	7,5	21,5	21,5	12	12	100
11104	8/6	R ¹ / ₄	11	26	23	12	14	100
11105	10/8	R ¹ / ₄	11	27	24	14	14	100

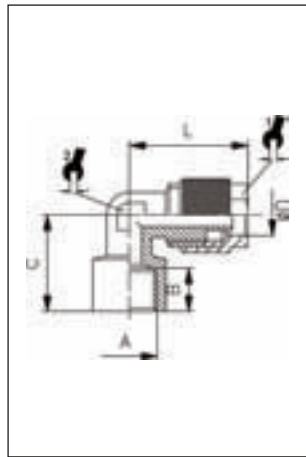


305DZ

Otočná L - spojka

Swivel elbow adaptor with O-ring, cyl.

VT	ØD	A	B	C	L			
11151	6/4	G ¹ / ₈	6	22	20,5	10	13	100
11152	6/4	G ¹ / ₄	8	26	20,5	10	16	100
11153	8/6	G ¹ / ₈	6	22	21,5	12	13	100
11154	8/6	G ¹ / ₄	8	26,5	23	12	16	100
11155	10/8	G ¹ / ₄	8	27,5	24	14	16	100

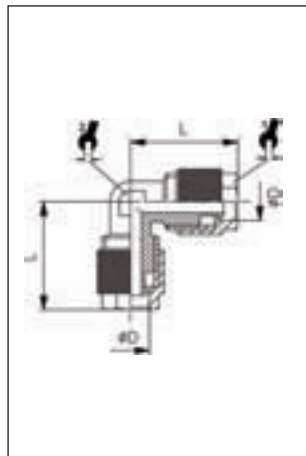


305F

L - spojka

Straight female adaptor

VT	ØD	A	B	C	L			
11201	5/3	G ¹ / ₈	7,5	18	20,5	8	8	100
11202	6/4	G ¹ / ₈	7,5	18	20,5	10	8	100
11203	6/4	G ¹ / ₄	11	21	21	10	9	100
11204	8/6	G ¹ / ₈	7,5	19	22	12	9	100
11205	8/6	G ¹ / ₄	11	21	23,5	12	9	100
11206	10/8	G ¹ / ₄	11	22	25,5	14	11	100
11207	10/8	G ³ / ₈	11,5	25	25,5	14	14	100

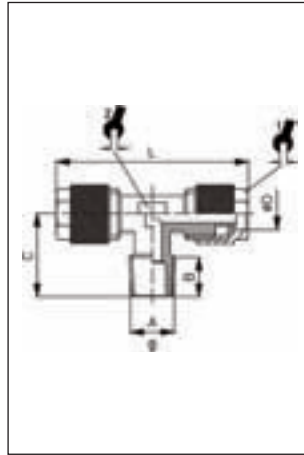


306

L - spojka

Elbow connector

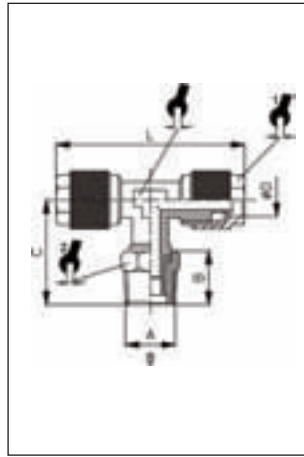
VT	ØD	L			
11302	5/3	20,5	8	8	100
11303	6/4	20,5	10	8	100
11304	8/6x6/4	22	12	9	100
11305	8/6	22	12	9	100
11306	10/8	25,5	14	11	50
11307	12/10	27	15	13	50
11308	15/12,5	33,5	22	16	50



307

T-kus s vonk. závítom zdola | Central T-adaptor, con.

VT	ØD	A	B	C	L			
12002	5/3	R ¹ / ₈	7,5	15	37	8	8	100
12003	6/4	R ¹ / ₈	7,5	15	37	10	8	100
12004	6/4	R ¹ / ₄	11	19	41	10	9	100
12006	8/6	R ¹ / ₈	7,5	16,5	40	12	9	100
12007	8/6	R ¹ / ₄	11	20,5	44	12	9	100
12008	8/6	R ³ / ₈	11,5	20,5	45	12	12	100
12009	10/8	R ¹ / ₈	7,5	18	48	14	11	100
12010	10/8	R ¹ / ₄	11	22	48	14	11	50
12011	10/8	R ³ / ₈	11,5	22	51	14	11	50
12013	12/10	R ³ / ₈	11,5	22,5	54	15	13	50
12015	15/12,5	R ¹ / ₂	14	28	63	22	16	50

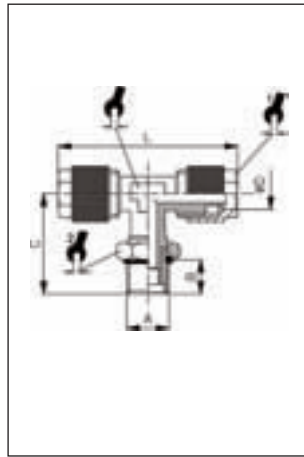


307DK

T-kus s vonk. závítom zdola

Central T-taper adaptor, con.

VT	ØD	A	B	C	L				
12101	6/4	R ¹ / ₈	7,5	21,5	41	8	10	12	100
12102	6/4	R ¹ / ₄	11	25	41	9	10	14	100
12103	8/6	R ¹ / ₈	7,5	22	43	9	12	12	100
12104	8/6	R ¹ / ₄	11	25,5	43	9	12	14	100
12105	10/8	R ¹ / ₄	11	27	48	11	14	14	100

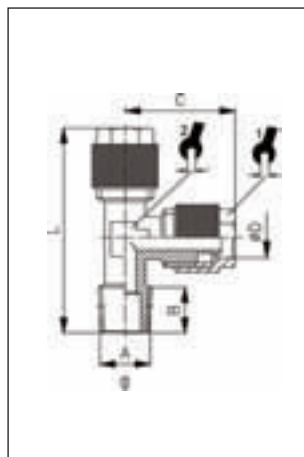


307DZ

Otočný T-kus

Rotary T-adaptor with O-ring, cyl.

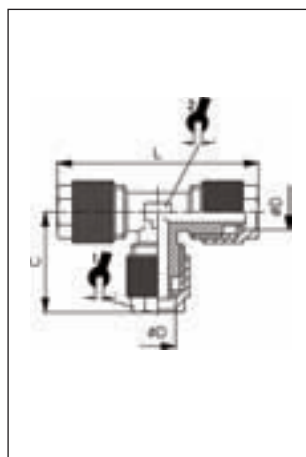
VT	ØD	A	B	C	L				
12151	6/4	G ¹ / ₈	6	22	39	8	8	13	100
12152	6/4	G ¹ / ₄	8	26	39	9	8	16	100
12153	8/6	G ¹ / ₈	6	24	40	9	9	13	100
12154	8/6	G ¹ / ₄	8	27,5	40	9	9	16	100
12155	10/8	G ¹ / ₄	8	27,5	45	11	11	16	100



308

T-kus s vonk. závítom zbokú | Off-set T-adaptor, con.

VT	ØD	A	B	C	L			
12202	5/3	R ¹ / ₈	8,5	20,5	35,5	8	8	100
12203	6/4	R ¹ / ₈	8,5	20,5	35,5	10	8	100
12204	6/4	R ¹ / ₄	11	20,5	39	10	8	100
12205	8/6	R ¹ / ₈	8	22	36	12	9	100
12206	8/6	R ¹ / ₄	11	22	40	12	9	100
12207	8/6	R ³ / ₈	12	22	47	12	12	50
12208	10/8	R ¹ / ₈	7,5	25,5	38,5	14	11	50
12209	10/8	R ¹ / ₄	12	25,5	41	14	11	50
12210	10/8	R ³ / ₈	12	25,5	41,5	14	11	50
12212	12/10	R ³ / ₈	12,5	28	45	15	13	50
12214	15/12,5	R ¹ / ₂	14,5	32,5	54	22	16	25

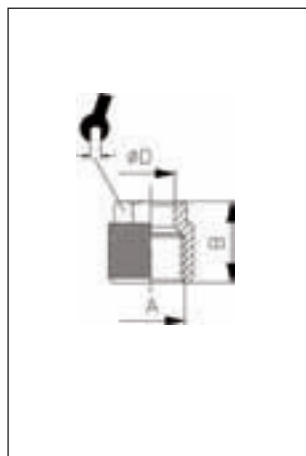
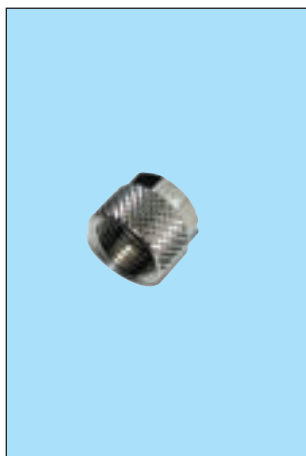


309

T - kus

T-connector

VT	ØD	C	L			
12300	4/2,7	19,5	38,5	7	8	100
12302	5/3	20,5	41	8	8	100
12303	6/4	20,5	41	10	8	100
12304	8/6x6/4	20,5	44	12	9	100
12305	8/6	22	44	12	9	100
12306	10/8x6/4	20,5	51	14	11	100
12307	10/8x8/6	22	51	14	11	50
12308	10/8	25,5	51	14	11	50
12309	12/10	28	54	15	13	50
12310	15/12,5	32,5	63	22	16	25

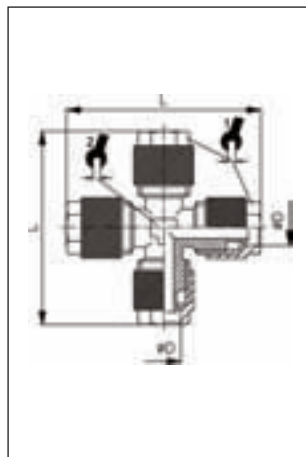


310

Matica

Union nut

VT	ØD	A	B		
17001	4/2,7	M6x0,5	10	7	100
17002	4,3/3	M7x0,75	10	8	100
17003	5/3	M7x0,75	10	8	100
17004	6/4	M8x0,75	11	8	100
17005	6/4	M10x1	11	10	100
17006	8/6	M12x1	11,5	12	100
17007	10/8	M14x1	13,5	14	100
17008	12/10	M16x1	15	15	100
17009	15/12,5	M20x1	16	22	50

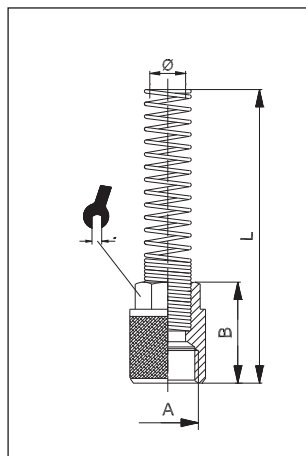


311

Kříž

Cross adaptor

VT	ØD	L			
13001	5/3	41,5	8	8	100
13002	6/4	41,5	10	8	100
13003	8/6	44,5	12	9	100
13004	10/8	51	14	11	50
13005	12/10	58	15	13	50
13006	15/12,5	64	22	17	50

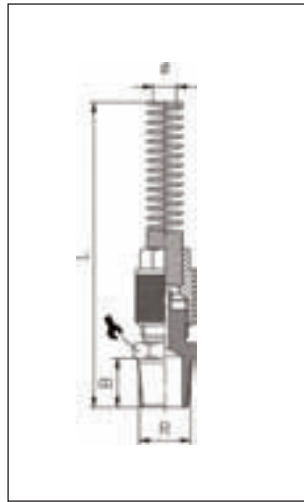


312

Koncovka na špirálovú hadicu - vnútorný závit

Nut + protective spring

VT	ØD	A	B	L		
17101	6/4	M10x1	18	93	10	50
17102	8/6	M12x1	18	98	12	50
17103	10/8	M14x1	20	105	14	50
17104	12/10	M16x1	22	112	15	50

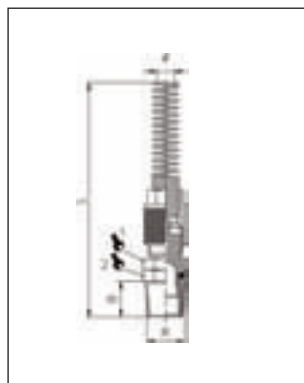


313

Koncovka na špirálovú hadicu s kužel'. závitom

Nut + spring

VT	Ø	R	B	L		
10251	6/4	R ^{1/8}	7,5	107,5	12	50
10252	6/4	R ^{1/4}	11	111,5	14	50
10253	8/6	R ^{1/8}	7,5	113,5	14	50
10254	8/6	R ^{1/4}	11	117,5	14	50
10255	8/6	R ^{3/8}	11,5	118,5	17	50
10256	8/6	R ^{1/2}	14	120,5	22	50
10257	10/8	R ^{1/8}	7,5	120,5	14	50
10258	10/8	R ^{1/4}	11	124,5	14	50
10259	10/8	R ^{3/8}	11,5	125	17	25
10260	10/8	R ^{1/2}	14	128	22	25
10261	12/10	R ^{3/8}	11,5	132	17	25
10262	12/10	R ^{1/2}	14	135	22	25

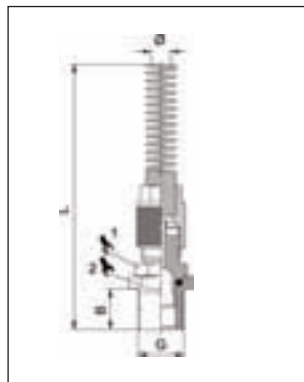


314

Otočná koncovka na špirálovú hadicu s kužel'. závitom

Swivel Nut + spring

VT	Ø	R	B	L			
10263	6/4	R ^{1/8}	7,5	118	12	12	50
10264	6/4	R ^{1/4}	11	122	14	14	50
10265	8/6	R ^{1/8}	7,5	123	12	12	50
10266	8/6	R ^{1/4}	11	127	14	14	50
10267	10/8	R ^{1/4}	11	134	14	14	25
10268	12/10	R ^{3/8}	11,5	142	17	17	25

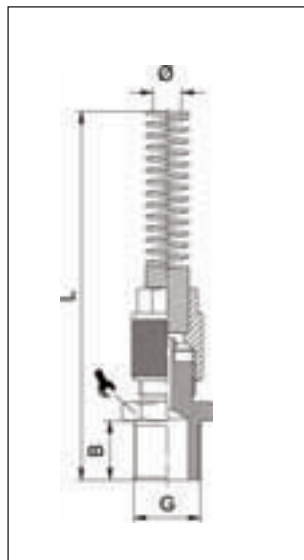


315

Otočná koncovka na špirálovú hadicu

Swivel Nut + spring

VT	Ø	G	B	L			
10271	6/4	G ^{1/8}	7,5	118	12	13	50
10272	6/4	G ^{1/4}	11	122	14	16	50
10273	8/6	G ^{1/8}	7,5	123	12	13	50
10274	8/6	G ^{1/4}	11	127	14	16	50
10275	10/8	G ^{1/4}	11	134	14	16	25
10276	12/10	G ^{3/8}	11,5	142	17	18	25

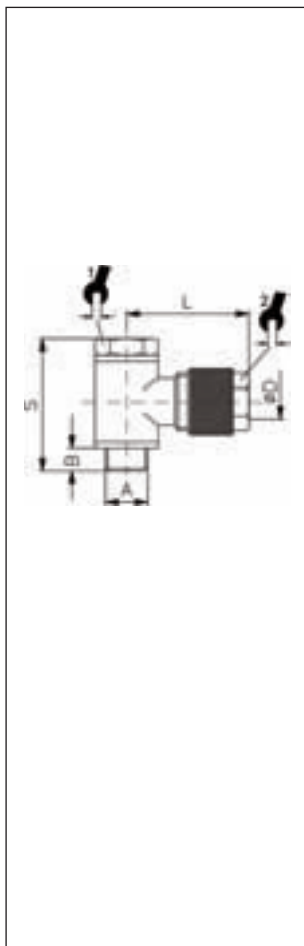


316

Koncovka na špirálovú hadicu - vonk. závit

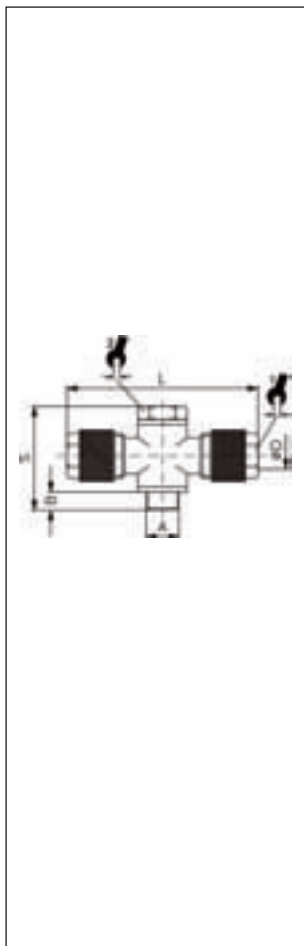
Nut + spring

VT	Ø	G	B	L		
10281	6/4	G ^{1/8}	6	106	13	50
10282	6/4	G ^{1/4}	8	108,5	17	50
10283	6/4	G ^{3/8}	9	109,5	19	50 *
10284	6/4	G ^{1/2}	10	112	24	50 *
10285	8/6	G ^{1/8}	6	112	14	50
10286	8/6	G ^{1/4}	8	114,5	17	50
10287	8/6	G ^{3/8}	9	115,5	19	50
10288	8/6	G ^{1/2}	10	116,5	24	50
10289	10/8	G ^{1/8}	6	119	14	50
10291	10/8	G ^{1/4}	8	121	17	50
10292	10/8	G ^{3/8}	9	122,5	19	25
10293	10/8	G ^{1/2}	10	124	24	25 *
10294	12/10	G ^{3/8}	9	129,5	19	25 *
10295	12/10	G ^{1/2}	10	131	24	25 *

**401****Uhlové šrubenie**

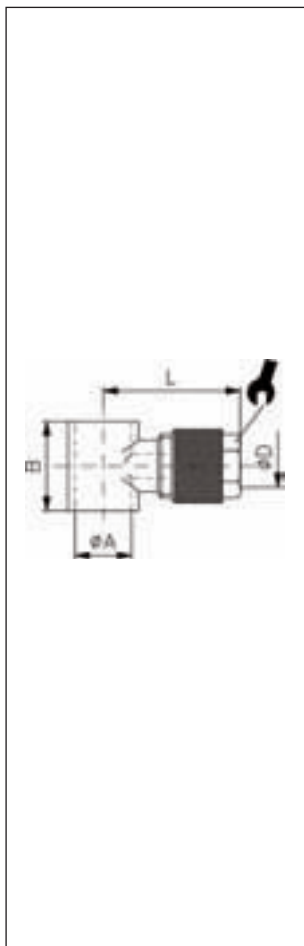
Complete single banjo adaptor

VT	ØD	A	B	S	L			
S25521	4/2,7	M5	3,5	23	16,5	7	8	100
S25523	4/2,7	G ¹ / ₈	6	28	23	7	10	100
S25500	4,3/3	M5	4	17,5	16,5	8	8	100
S25518	4,3/3	G ¹ / ₈	6	28	21	14	8	100
S25519	5/3	M5	4	17,5	16,5	8	8	100
S25520	5/3	G ¹ / ₈	4	28	23	14	8	100
S25501	6/4	M5	4	17,5	16,5	8	9	100
S25502	6/4	G ¹ / ₈	5,5	28	23	14	10	100
S25503	6/4	G ¹ / ₄	8	33	26	17	10	100
S25504	6/4	G ³ / ₈	9	36	26	19	10	100
S25505	8/6	G ¹ / ₈	5,5	28	23	14	12	100
S25506	8/6	G ¹ / ₄	8	33	26	17	12	100
S25507	8/6	G ³ / ₈	9	36	26	19	12	100
S25508	8/6	G ¹ / ₂	10	42	31	24	12	100
S25530	10/8	G ¹ / ₈	6	28	27,5	14	14	50
S25509	10/8	G ¹ / ₄	8	33	29,5	17	14	50
S25510	10/8	G ³ / ₈	9	36	30,5	19	14	50
S25511	10/8	G ¹ / ₂	10	42	34	24	14	50
S25531	12/10	G ³ / ₈	9	36	31,5	19	15	25
S25512	12/10	G ¹ / ₂	10	42	35	24	15	25
S25513	12/9	G ¹ / ₄	10	36	26	17	15	25
S25514	12/9	G ³ / ₈	8	36	30	19	15	25
S25532	15/12,5	G ¹ / ₂	10	42	36,5	24	22	25

**402****Obojstranné uhlové šrubenie**

Complete double banjo adaptor

VT	ØD	A	B	S	L			
S25621	4,3/3	M5	4	17,5	33	8	8	100
S25622	4,3/3	G ¹ / ₈	6	28	46,5	8	14	100
S25623	5/3	M5	4	17,5	33	8	8	100
S25624	5/3	G ¹ / ₈	4	28	46,5	8	14	100
S25625	6/4	M5	4	17,5	33	9	8	100
S25601	6/4	G ¹ / ₈	6	28	46,5	10	14	100
S25602	6/4	G ¹ / ₄	8	33	50	10	17	100
S25603	6/4	G ³ / ₈	9,5	36	53,5	10	19	100
S25604	8/6	G ¹ / ₈	6	28	50	12	14	100
S25605	8/6	G ¹ / ₄	8	33	55	12	17	100
S25606	8/6	G ³ / ₈	9,5	36	55,5	12	19	100
S25607	8/6	G ¹ / ₂	10	42	61	12	24	100
S25631	10/8	G ¹ / ₈	6	28	53	14	14	50
S25608	10/8	G ¹ / ₄	8	33	59	14	17	50
S25609	10/8	G ³ / ₈	9	36	61	14	19	50
S25610	10/8	G ¹ / ₂	10	42	68	14	24	25
S25632	12/10	G ³ / ₈	9,5	36	63	15	19	25
S25611	12/10	G ¹ / ₂	10	42	70	15	24	25
S25614	12/9	G ³ / ₈	8	31,5	66	15	19	25
S25633	15/12,5	G ¹ / ₂	10	42	62	22	24	25

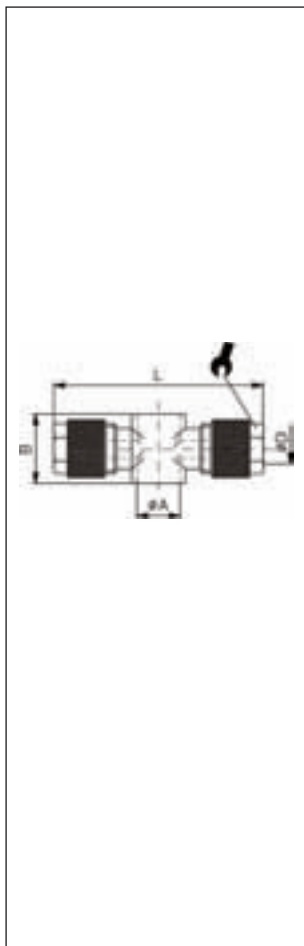


405

Prietokové oko

Single banjo body

VT	ØD	A	B	L		
15002	4/2,7	M5	9	16	8	100
15001	4/2,7	G ^{1/8}	15	21	8	100
15004	5/3	M5	9	15,5	8	100
15005	5/3	G ^{1/8}	15	23	8	100
15006	6/4	M5	9	16,5	9	100
15007	6/4	G ^{1/8}	15	23	10	100
15008	6/4	G ^{1/4}	17	26	10	100
15009	6/4	G ^{3/8}	20	26	10	100
15010	8/6	G ^{1/8}	15	23	12	100
15011	8/6	G ^{1/4}	17	26	12	100
15012	8/6	G ^{3/8}	20	26	12	100
15013	8/6	G ^{1/2}	24	31	12	100
15014	10/8	G ^{1/8}	15	27,5	14	50
15015	10/8	G ^{1/4}	17	29,5	14	50
15016	10/8	G ^{3/8}	20	30,5	14	50
15017	10/8	G ^{1/2}	24	34	14	50
15018	12/10	G ^{3/8}	20	31,5	15	25
15019	12/10	G ^{1/2}	24	35	15	25
15021	12/9	G ^{1/4}	20	31,5	15	25
15023	12/9	G ^{3/8}	20	31,5	15	25
15020	15/12,5	G ^{1/2}	24	36,5	22	25



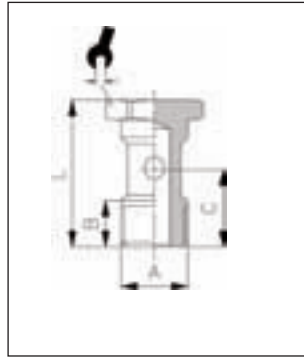
406

Obojstranné prietokové oko

Double banjo body

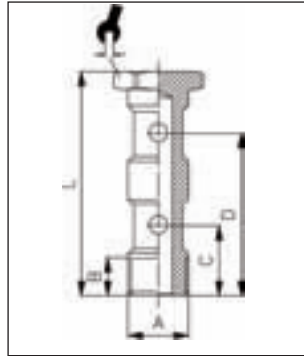
VT	ØD	A	B	L		
15101	4/2,7	M5	12,5	39	8	100
15102	4/2,7	G ^{1/8}	15	46,5	8	100
15120	4,3/3	M5	9	33	8	100
15121	4,3/3	G ^{1/8}	15	46,5	8	100
15103	5/3	M5	9	33	8	100
15104	5/3	G ^{1/8}	15	46,5	8	100
15105	6/4	M5	9	33	9	100
15106	6/4	G ^{1/8}	15	46,5	10	100
15107	6/4	G ^{1/4}	17	50,5	10	100
15108	6/4	G ^{3/8}	20	53,5	10	100
15109	8/6	G ^{1/8}	15	50	12	100
15110	8/6	G ^{1/4}	17	55	12	100
15111	8/6	G ^{3/8}	20	55,5	12	100
15112	8/6	G ^{1/2}	24	62,5	12	100
15113	10/8	G ^{1/8}	15	55	14	50
15114	10/8	G ^{1/4}	17	59	14	50
15115	10/8	G ^{3/8}	20	61	14	50
15116	10/8	G ^{1/2}	24	68	14	50
15117	12/10	G ^{3/8}	20	63	15	25
15118	12/10	G ^{1/2}	24	70	15	25
15122	12/9	G ^{3/8}	14,5	66	15	25
15119	15/12,5	G ^{1/2}	24	62	22	25

Typ 300 + 400

**407****Prietoková skrutka**

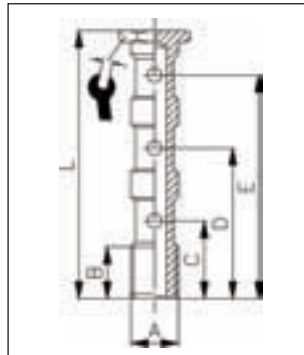
Single screw

VT	A	B	C	L		
14101	M5	5,8	9,6	17,5	8	100
14106	M6	7,5	10,8	19	8	100
14102	G ^{1/8}	8,5	15	28	14	50
14403	G ^{1/4}	12	18	33	17	50
14404	G ^{3/8}	13	21	36	19	50
14405	G ^{1/2}	15	23,5	42	24	25

**408****Dvojitá prietoková skrutka**

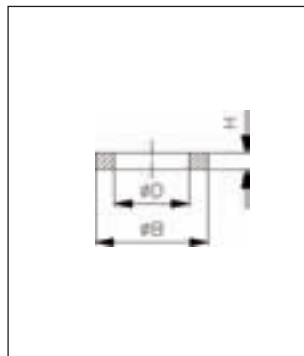
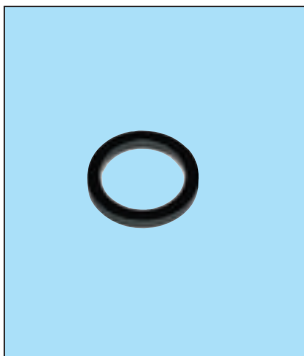
Double screw

VT	A	B	C	D	L		
14202	G ^{1/8}	9	15	31	44,5	14	50
14503	G ^{1/4}	11	17	36	51,5	17	50
14504	G ^{3/8}	14	20,5	43	58	19	50
14505	G ^{1/2}	15,5	23,5	49,5	68	24	25

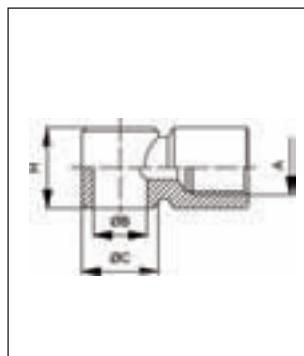
**415****Trojité prietoková skrutka**

Triple screw

VT	A	B	C	D	E	L		
14301	G ^{1/8}	9	16	32,5	48	60	14	50
14703	G ^{1/4}	12	18,5	37	55,5	70,5	17	50
14303	G ^{3/8}	13	20	43	65	80	19	50
14705	G ^{1/2}	16	25	51	70,5	94	24	25

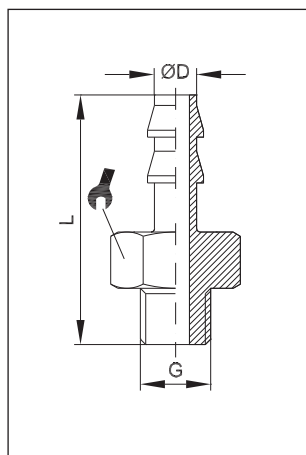
**411****PVC - krúžok** | Sealing ring, black

VT	ØD	ØB	H	für Gew.	
800031	5,3	7,7	1	M5	200
800032	10,2	13	1,5	G ^{1/8}	200
800033	13,4	17,9	2	G ^{1/4}	200
800034	17,1	21,8	2	G ^{3/8}	200
800035	21,3	26,5	2	G ^{1/2}	100
800036	26,7	32,4	2	G ^{3/4}	100
800037	33,5	39	2	G1	100

**412****Prietokové oko**

Female single banjo body

VT	A	ØB	ØC	H	
60901	M5	5	-	10	100
60902	G ^{1/8}	10	14	15	50
60903	G ^{1/4}	13,5	18	17	50
60904	G ^{3/8}	17	21	20	25
60905	G ^{1/2}	21	26	24	25

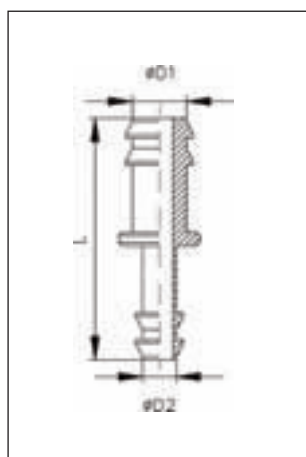


601

Nátrubok s vonkajším závitom

Connector male threaded

VT	ØD	G	L		
150001	3	M5	17	8	50
150002	4	M5	18	8	50

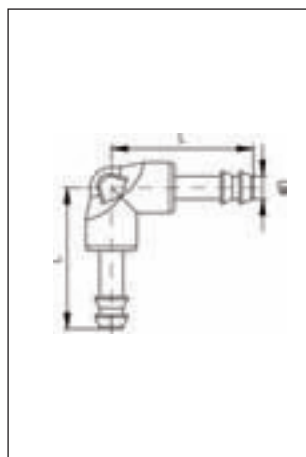


603

Hadicová spojka

Push-in connector

VT	ØD1	ØD2	L	
150401	2	2	20	50
150402	3	2	20	50
150403	3	3	20	50
150404	4	3	21	50
150405	4	4	22	50
150406	6	4	22	50
150407	6	6	22	50

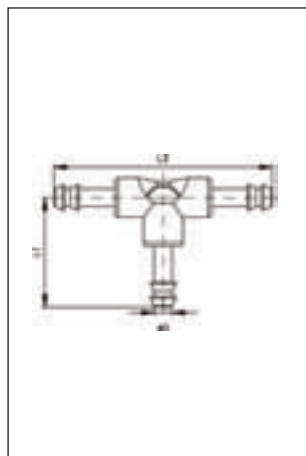


604

L - kus

Push-in elbow connector

VT	ØD	L	
151301	2	16	50
151302	3	16	50
151303	4	22	50
151304	6	22	50



605

T - kus

T-Connector

VT	ØD	L1	L2	
152301	2	16	32	50
152302	3	16	32	50
152303	4	22	44	50
152304	6	22	44	50